

HSF

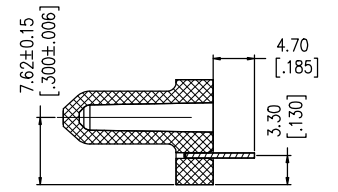
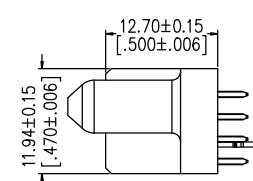
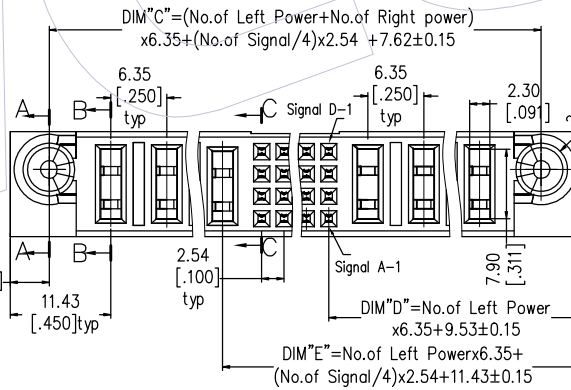
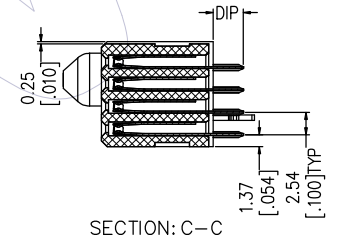
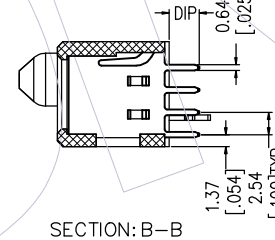
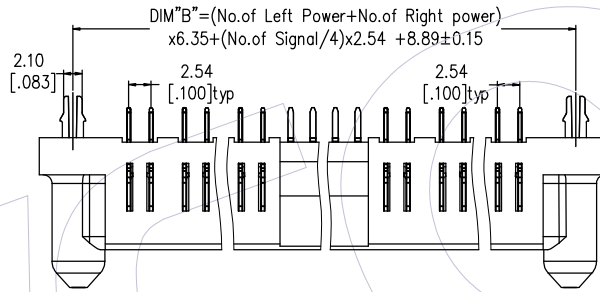
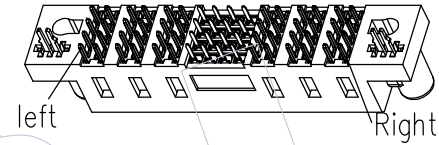
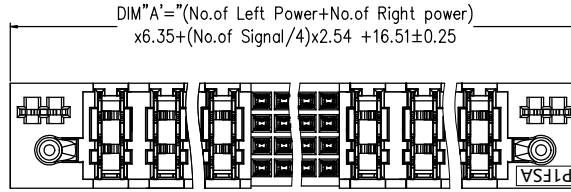
NOTES:

1. Insulator material: PA9T+33%GF, UL94V-0;
2. Terminal material: Copper Alloy;
Terminal Plating: Au/Sn Plated Over Nickel ;
3. Rated Voltage: Signal 50V; Power 600V
4. Rated Current: Power 30A; Signal 2.5A;
5. Contact Resistance:
Power 0.7mΩ Max; Signal 20mΩ Max;
6. Insulation Resistance: DC500V
Power 10000MΩ Min; Signal 500MΩ Min;
7. Insulation Withstand Voltage:
Power 2500VAC/1min; Signal 1000VAC/1min ;
8. Durability :200 cycling;
9. Operation Temperature: -20°C to +105°C;

Ordering Information:

PIFS A - XX XX XX XX XX X X A 1

No. Left Power: 01=1Pin, 20=20Pin
No. Right Power: 01=1Pin, 20=20Pin
No. Signal: 04=4Pin, 08=8Pin, A0=100Pin, A1=104Pin, B3=148Pin
Power Contact Plated: S3=10u" Gold/Tin, S4=15u" Gold/Tin, S5=30u" Gold/Tin, w3=10u" Gold/Matte Tin, w4=15u" Gold/Matte Tin, w5=30u" Gold/Matte Tin
Signal Contact Plated: S3=10u" Gold/Tin, S4=15u" Gold/Tin, S5=30u" Gold/Tin, w3=10u" Gold/Matte Tin, w4=15u" Gold/Matte Tin, w5=30u" Gold/Matte Tin
Tail Options(DIP Type): A=3.43mm, B=2.29mm, C=4.19mm
Fixed Mode: M: W/T Lock, N: W/O Lock
Packing: A=Tray



A3	19/04/15	Update surface
A2	18/09/15	Add Product Data Sheet
A1	18/08/30	MODIFY P/N
A0	18/03/08	NEW
REV	DATE	MODIFICATION DESCRIPTION

OPERATION	DATE	SCALE	FIT	PART NO.
Surong Xu	19/04/15	mm	A4	P1FSA-XXXXXXXXXXA1
CHECK	DATE	inch	1/5	TITLE:
APPROVE	DATE	SIZE	1/5	PSP Spacing A 180° DIP FEMALE
ANGLE	DATE	SHEET	1/5	(TYPE-1:Power+2.54Signal+Power)
DIM	DATE	PROJ.	1/5	Customer NO.

UNIT	PART NO.
inch	P1FSA-XXXXXXXXXXA1
SIZE	TITLE:
A4	PSP Spacing A 180° DIP FEMALE
SHEET	(TYPE-1:Power+2.54Signal+Power)
1/5	Customer NO.

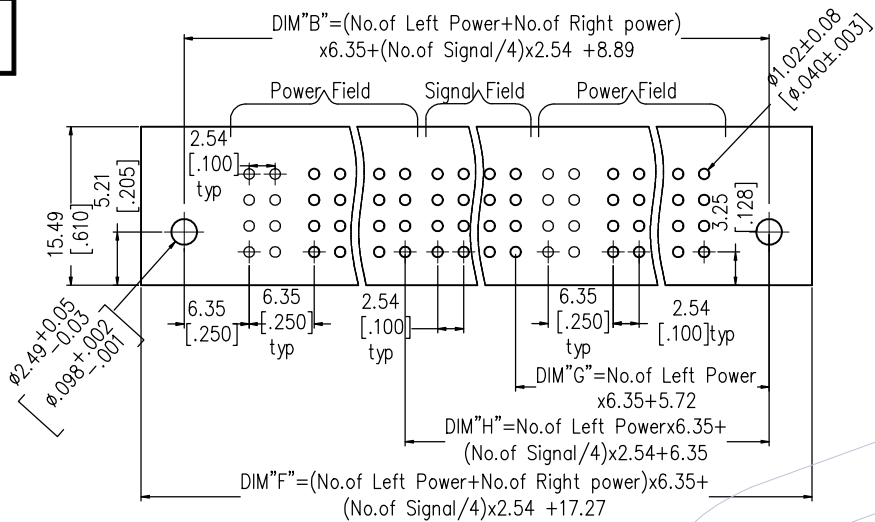
WCON

Http: www.wcon.com

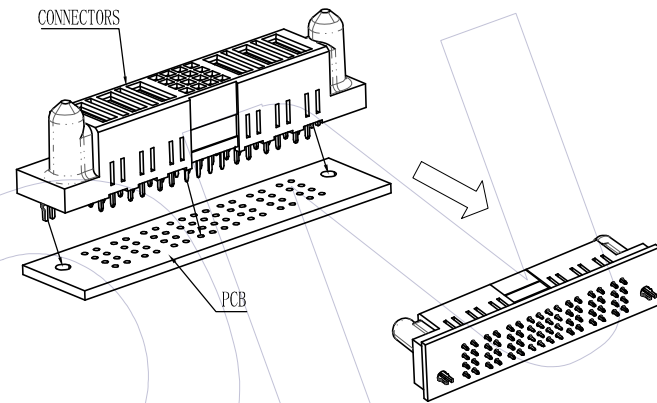
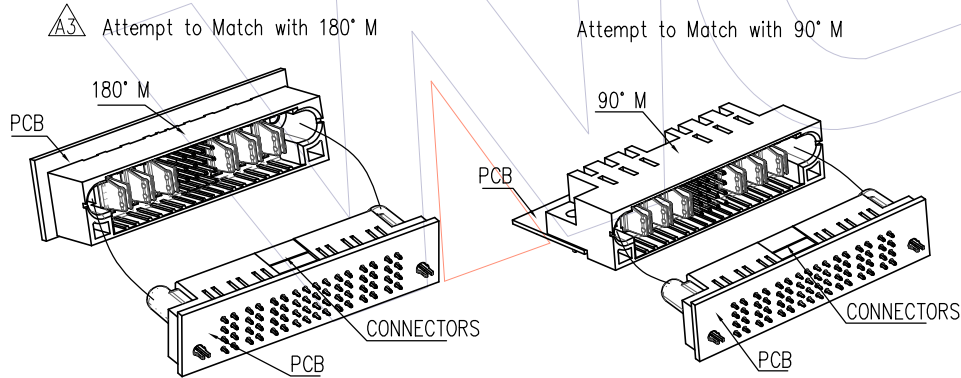
WCON-Dongguan Tel: +86 769 85358920 Fax: +86 769 85358915 E-mail: sales@wcon.com

WCON-Kunshan Tel: +86 512 57468408 Fax: +86 512 57468468 E-mail: salesks@wcon.com

HSF

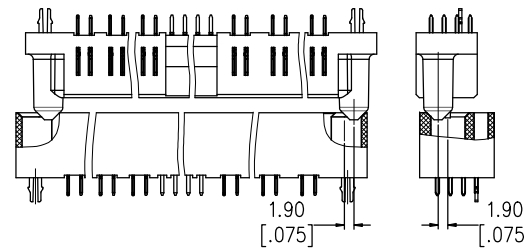


Recommended P.C.B Layout (Top Side)
(PCB BOARD TOLERANCE ± 0.05)



$\triangle A3$ PSP 180° DIP INSTALL CONNECTORS PCB

$\triangle A3$ Blind Mate Guide Ends
SCALE: 1:2



A3	19/04/15	Update surface	—	OPERATION	DRAW	DATE	SCALE	FIT	PART NO.	 Http: www.wcon.com WCON-Dongguan Tel: +86 769 85358920 Fax: +86 769 85358915 E-mail: sales@wcon.com WCON-Kunshan Tel: +86 512 57468408 Fax: +86 512 57468468 E-mail: salesks@wcon.com
A2	18/09/15	Add Product Data Sheet	—	x.x	Surong Xu	19/04/15	UNIT	mm	P1FSA-XXXXXXXXXXA1 $\triangle A1$	
A1	18/08/30	MODIFY P/N	—	x.xx	CHECK	DATE	SIZE	inch	TITLE:	
A0	18/03/08	NEW	—	x.xxx	APPROVE	DATE	SHEET	A4	PSP Spacing A 180° DIP FEMALE $\triangle A1$ (TYPE-1: Power+2.54Signal+Power)	
REV	DATE	MODIFICATION DESCRIPTION	CHANGE	Angle DIM	$\pm 3'$ TOL		PROJ.	2/5	Customer NO.	

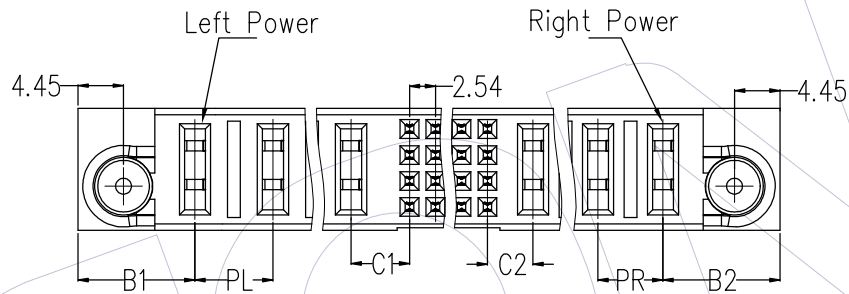
HSF

Ordering Information:

P1 FS A -XX XX XX XX XX X X A 1

See table "Spec code"

△△ Schematic diagram of terminal spacing



△△

Spec code	Terminal spacing size					
	B1	PL	C1	C2	PR	B2
A	11.43	6.35	4.45	4.45	6.35	11.43
B	11.43	6.35	4.45	5.72	6.35	11.43
C	11.43	6.35	4.45	4.45	7.62	12.07
D	12.07	7.62	5.08	5.08	7.62	12.07
E	12.07	7.62	5.08	4.45	6.35	11.43
F	11.43	7.62	5.72	4.45	6.35	11.43

A3	19/04/15	Update surface	—	OPERATION		DRAW Surong Xu	DATE 19/04/15	SCALE	FIT mm	PART NO. P1FSA-XXXXXXXXXXXXA1 △△	WCON Http: www.wcon.com
A2	18/09/15	Add Product Data Sheet	—	x.x	±0.40						
A1	18/08/30	MODIFY P/N	—	x.xx	±0.25	APPROVE	DATE	SIZE A4	Customer NO.	WCON-Kunshan Tel: +86 512 57468408 Fax: +86 512 57468468 E-mail: salesks@wcon.com	
A0	18/03/08	NEW	—	x.xxx	±0.15						Angle DIM
REV	DATE	MODIFICATION DESCRIPTION	CHANGE	DIM	TOL	PROJ.	⊕				



Product Data Sheet

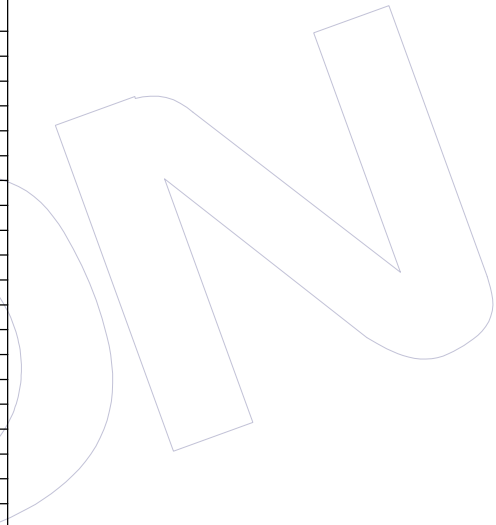
No.	P/N	No. Left Power	No. Signal	No. Right Power	DIM "A"	DIM "B"	DIM "C"	DIM "D"	DIM "E"	DIM "F"	DIM "G"	DIM "H"	No.	P/N	No. Left Power	No. Signal	No. Right Power	DIM "A"	DIM "B"	DIM "C"	DIM "D"	DIM "E"	DIM "F"	DIM "G"	DIM "H"
1	P1FSA-112003XXXXXXA1	11	20	3	118.11	110.49	109.22	79.38	93.98	118.87	75.57	88.90	31	P1FSA-041604XXXXXXA1	4	16	4	77.47	69.85	68.58	34.93	46.99	78.23	31.12	41.91
2	P1FSA-108410XXXXXXA1	10	84	10	196.85	189.23	187.96	73.03	128.27	197.61	69.22	123.19	32	P1FSA-041603XXXXXXA1	4	16	3	71.12	63.50	62.23	34.93	46.99	71.88	31.12	41.91
3	P1FSA-102006XXXXXXA1	10	20	6	130.81	123.19	121.92	73.03	87.63	131.57	69.22	82.55	33	P1FSA-041602XXXXXXA1	4	16	2	64.77	57.15	55.88	34.93	46.99	65.53	31.12	41.91
4	P1FSA-093204XXXXXXA1	9	32	4	119.38	111.76	110.49	66.68	88.90	120.14	62.87	83.82	34	P1FSA-041204XXXXXXA1	4	12	4	74.93	67.31	66.04	34.93	44.45	75.69	31.12	39.37
5	P1FSA-086010XXXXXXA1	8	60	10	168.91	161.29	160.02	60.33	100.33	169.67	56.52	95.25	35	P1FSA-041202XXXXXXA1	4	12	2	62.23	54.61	53.34	34.93	44.45	62.99	31.12	39.37
6	P1FSA-082408XXXXXXA1	8	24	8	133.35	125.73	124.46	60.33	77.47	134.11	56.52	72.39	36	P1FSA-040804XXXXXXA1	4	8	4	72.39	64.77	63.50	34.93	41.91	73.15	31.12	36.83
7	P1FSA-073206XXXXXXA1	7	32	6	119.38	111.76	110.49	53.98	76.20	120.14	50.17	71.12	37	P1FSA-03A703XXXXXXA1	3	128	3	135.89	128.27	127.00	28.58	111.76	136.65	24.77	106.68
8	P1FSA-072807XXXXXXA1	7	28	7	123.19	115.57	114.30	53.98	73.66	123.95	50.17	68.58	38	P1FSA-036402XXXXXXA1	3	64	2	88.90	81.28	80.01	28.58	71.12	89.66	24.77	66.04
9	P1FSA-072406XXXXXXA1	7	24	6	114.30	106.68	105.41	53.98	71.12	115.06	50.17	66.04	39	P1FSA-034803XXXXXXA1	3	48	3	85.09	77.47	76.20	28.58	60.96	85.85	24.77	55.88
10	P1FSA-071607XXXXXXA1	7	16	7	115.57	107.95	106.68	53.98	66.04	116.33	50.17	60.96	40	P1FSA-033603XXXXXXA1	3	36	3	77.47	69.85	68.58	28.58	53.34	78.23	24.77	48.26
11	P1FSA-062807XXXXXXA1	6	28	7	116.84	109.22	107.95	47.63	67.31	117.60	43.82	62.23	41	P1FSA-033203XXXXXXA1	3	32	3	74.93	67.31	66.04	28.58	50.80	75.69	24.77	45.72
12	P1FSA-062406XXXXXXA1	6	24	6	107.95	100.33	99.06	47.63	64.77	108.71	43.82	59.69	42	P1FSA-032408XXXXXXA1	3	24	8	101.60	93.98	92.71	28.58	45.72	102.36	24.77	40.64
13	P1FSA-062004XXXXXXA1	6	20	4	92.71	85.09	83.82	47.63	62.23	93.47	43.82	57.15	43	P1FSA-032406XXXXXXA1	3	24	6	88.90	81.28	80.01	28.58	45.72	89.66	24.77	40.64
14	P1FSA-061603XXXXXXA1	6	16	3	83.82	76.20	74.93	47.63	59.69	84.58	43.82	54.61	44	P1FSA-032404XXXXXXA1	3	24	4	76.20	68.58	67.31	28.58	45.72	76.96	24.77	40.64
15	P1FSA-061602XXXXXXA1	6	16	2	77.47	69.85	68.58	47.63	59.69	78.23	43.82	54.61	45	P1FSA-032403XXXXXXA1	3	24	3	69.85	62.23	60.96	28.58	45.72	70.61	24.77	40.64
16	P1FSA-061209XXXXXXA1	6	12	9	119.38	111.76	110.49	47.63	57.15	120.14	43.82	52.07	46	P1FSA-032005XXXXXXA1	3	20	5	80.01	72.39	71.12	28.58	43.18	80.77	24.77	38.10
17	P1FSA-060806XXXXXXA1	6	8	6	97.79	90.17	88.90	47.63	54.61	98.55	43.82	49.53	47	P1FSA-032003XXXXXXA1	3	20	3	67.31	59.69	58.42	28.58	43.18	68.07	24.77	38.10
18	P1FSA-054004XXXXXXA1	5	40	4	99.06	91.44	90.17	41.28	68.58	99.82	37.47	63.50	48	P1FSA-031603XXXXXXA1	3	16	3	64.77	57.15	55.88	28.58	40.64	65.53	24.77	35.56
19	P1FSA-053606XXXXXXA1	5	36	6	109.22	101.60	100.33	41.28	66.04	109.98	37.47	60.96	49	P1FSA-031602XXXXXXA1	3	16	2	58.42	50.80	49.53	28.58	40.64	59.18	24.77	35.56
20	P1FSA-052405XXXXXXA1	5	24	5	95.25	87.63	86.36	41.28	58.42	96.01	37.47	53.34	50	P1FSA-031203XXXXXXA1	3	12	3	62.23	54.61	53.34	28.58	38.10	62.99	24.77	33.02
21	P1FSA-052002XXXXXXA1	5	20	2	73.66	66.04	64.77	41.28	55.88	74.42	37.47	50.80	51	P1FSA-030804XXXXXXA1	3	8	4	66.04	58.42	57.15	28.58	35.56	66.80	24.77	30.48
22	P1FSA-050805XXXXXXA1	5	8	5	85.09	77.47	76.20	41.28	48.26	85.85	37.47	43.18	52	P1FSA-030803XXXXXXA1	3	8	3	59.69	52.07	50.80	28.58	35.56	60.45	24.77	30.48
23	P1FSA-04A004XXXXXXA1	4	100	4	130.81	123.19	121.92	34.93	100.33	131.57	31.12	95.25	53	P1FSA-030403XXXXXXA1	3	4	3	57.15	49.53	48.26	28.58	33.02	57.91	24.77	27.94
24	P1FSA-044804XXXXXXA1	4	48	4	97.79	90.17	88.90	34.93	67.31	98.55	31.12	62.23	54	P1FSA-029602XXXXXXA1	2	96	2	102.87	95.25	93.98	22.23	85.09	103.63	18.42	80.01
25	P1FSA-043607XXXXXXA1	4	36	7	109.22	101.60	100.33	34.93	59.69	109.98	31.12	54.61	55	P1FSA-028002XXXXXXA1	2	80	2	92.71	85.09	83.82	22.23	74.93	93.47	18.42	69.85
26	P1FSA-042408XXXXXXA1	4	24	8	107.95	100.33	99.06	34.93	52.07	108.71	31.12	46.99	56	P1FSA-027202XXXXXXA1	2	72	2	87.63	80.01	78.74	22.23	69.85	88.39	18.42	64.77
27	P1FSA-042404XXXXXXA1	4	24	4	82.55	74.93	73.66	34.93	52.07	83.31	31.12	46.99	57	P1FSA-026802XXXXXXA1	2	68	2	85.09	77.47	76.20	22.23	67.31	85.85	18.42	62.23
28	P1FSA-042402XXXXXXA1	4	24	2	69.85	62.23	60.96	34.93	52.07	70.61	31.12	46.99	58	P1FSA-026002XXXXXXA1	2	60	2	80.01	72.39	71.12	22.23	62.23	80.77	18.42	57.15
29	P1FSA-042003XXXXXXA1	4	20	3	73.66	66.04	64.77	34.93	49.53	74.42	31.12	44.45	59	P1FSA-024802XXXXXXA1	2	48	2	72.39	64.77	63.50	22.23	54.61	73.15	18.42	49.53
30	P1FSA-042002XXXXXXA1	4	20	2	67.31	59.69	58.42	34.93	49.53	68.07	31.12	44.45	60	P1FSA-024002XXXXXXA1	2	40	2	67.31	59.69	58.42	22.23	49.53	68.07	18.42	44.45

A3	19/04/15	Update surface	—	OPERATION	DRAW	DATE	SCALE	FIT	PART NO.	 Http: www.wcon.com	
A2	18/09/15	Add Product Data Sheet	—	x.x ±0.40	Surong Xu	19/04/15	UNIT	mm	P1FSA-XXXXXXXXXXA1		
A1	18/08/30	MODIFY P/N	—	x.xx ±0.25	CHECK	DATE	SIZE	A4			TITLE:
A0	18/03/08	NEW	—	x.xxx ±0.15	APPROVE	DATE	SHEET	4/5	PSP Spacing A 180° DIP FEMALE		
REV	DATE	MODIFICATION DESCRIPTION	CHANGE	Angle ± 3° DIM TOL			PROJ.		Customer NO.	WCON-Dongguan Tel: +86 769 85358920 Fax: +86 769 85358915 E-mail: sales@wcon.com	WCON-Kunshan Tel: +86 512 57468408 Fax: +86 512 57468468 E-mail: salesks@wcon.com



Product Data Sheet

No.	P/N	No. Left Power	No. Signal	No. Right Power	DIM "A"	DIM "B"	DIM "C"	DIM "D"	DIM "E"	DIM "F"	DIM "G"	DIM "H"
61	P1FSA-023202XXXXXXA1	2	32	2	62.23	54.61	53.34	22.23	44.45	62.99	18.42	39.37
62	P1FSA-022408XXXXXXA1	2	24	8	95.25	87.63	86.36	22.23	39.37	96.01	18.42	34.29
63	P1FSA-022404XXXXXXA1	2	24	4	69.85	62.23	60.96	22.23	39.37	70.61	18.42	34.29
64	P1FSA-022403XXXXXXA1	2	24	3	63.50	55.88	54.61	22.23	39.37	64.26	18.42	34.29
65	P1FSA-022402XXXXXXA1	2	24	2	57.15	49.53	48.26	22.23	39.37	57.91	18.42	34.29
66	P1FSA-021604XXXXXXA1	2	16	4	64.77	57.15	55.88	22.23	34.29	65.53	18.42	29.21
67	P1FSA-021602XXXXXXA1	2	16	2	52.07	44.45	43.18	22.23	34.29	52.83	18.42	29.21
68	P1FSA-021202XXXXXXA1	2	12	2	49.53	41.91	40.64	22.23	31.75	50.29	18.42	26.67
69	P1FSA-020802XXXXXXA1	2	8	2	46.99	39.37	38.10	22.23	29.21	47.75	18.42	24.13
70	P1FSA-020801XXXXXXA1	2	8	1	40.64	33.02	31.75	22.23	29.21	41.40	18.42	24.13
71	P1FSA-020402XXXXXXA1	2	4	2	44.45	36.83	35.56	22.23	26.67	45.21	18.42	21.59
72	P1FSA-01A701XXXXXXA1	1	128	1	110.49	102.87	101.60	15.88	99.06	111.25	12.07	93.98
73	P1FSA-018001XXXXXXA1	1	80	1	80.01	72.39	71.12	15.88	68.58	80.77	12.07	63.50
74	P1FSA-017201XXXXXXA1	1	72	1	74.93	67.31	66.04	15.88	63.50	75.69	12.07	58.42
75	P1FSA-017201XXXXXXA1	1	72	1	74.93	67.31	66.04	15.88	63.50	75.69	12.07	58.42
76	P1FSA-016001XXXXXXA1	1	60	1	67.31	59.69	58.42	15.88	55.88	68.07	12.07	50.80
77	P1FSA-014801XXXXXXA1	1	48	1	59.69	52.07	50.80	15.88	48.26	60.45	12.07	43.18
78	P1FSA-014002XXXXXXA1	1	40	2	60.96	53.34	52.07	15.88	43.18	61.72	12.07	38.10
79	P1FSA-013601XXXXXXA1	1	36	1	52.07	44.45	43.18	15.88	40.64	52.83	12.07	35.56
80	P1FSA-013201XXXXXXA1	1	32	1	49.53	41.91	40.64	15.88	38.10	50.29	12.07	33.02
81	P1FSA-012401XXXXXXA1	1	24	1	44.45	36.83	35.56	15.88	33.02	45.21	12.07	27.94
82	P1FSA-012001XXXXXXA1	1	20	1	41.91	34.29	33.02	15.88	30.48	42.67	12.07	25.40
83	P1FSA-011608XXXXXXA1	1	16	8	83.82	76.20	74.93	15.88	27.94	84.58	12.07	22.86
84	P1FSA-011601XXXXXXA1	1	16	1	39.37	31.75	30.48	15.88	27.94	40.13	12.07	22.86
85	P1FSA-011201XXXXXXA1	1	12	1	36.83	29.21	27.94	15.88	25.40	37.59	12.07	20.32
86	P1FSA-010801XXXXXXA1	1	8	1	34.29	26.67	25.40	15.88	22.86	35.05	12.07	17.78
87	P1FSA-010401XXXXXXA1	1	4	1	31.75	24.13	22.86	15.88	20.32	32.51	12.07	15.24



A3	19/04/15	Update surface	—	OPERATION	DRAW	DATE	SCALE	FIT	PART NO.	 Http: www.wcon.com
A2	18/09/15	Add Product Data Sheet	—	x.x ±0.40	Surong Xu	19/04/15	UNIT	mm	TITLE: P1FSA-XXXXXXXXXXA1	
A1	18/08/30	MODIFY P/N	—	x.xx ±0.25	CHECK	DATE	SIZE	A4		
A0	18/03/08	NEW	—	x.xxx ±0.15	APPROVE	DATE	SHEET	5/5	Customer NO.	
REV	DATE	MODIFICATION DESCRIPTION	CHANGE	Angle DIM ± 3' TOL			PROJ.			

WCON-Dongguan Tel: +86 769 85358920 Fax: +86 769 85358915 E-mail: sales@wcon.com	WCON-Kunshan Tel: +86 512 57468408 Fax: +86 512 57468468 E-mail: salesks@wcon.com
---	--