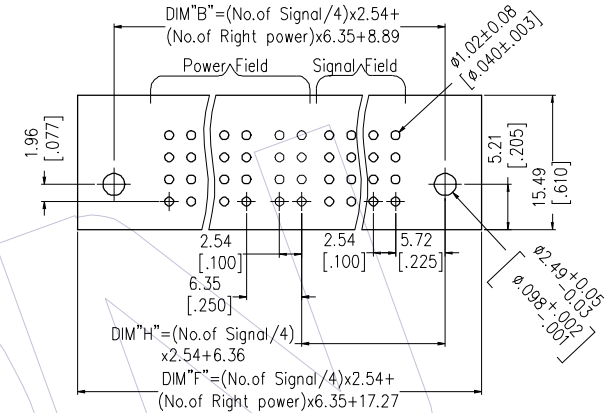
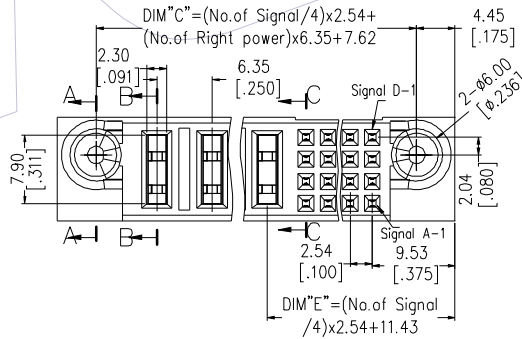
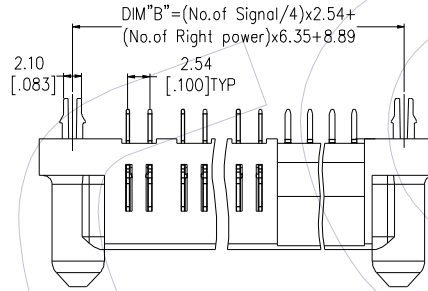
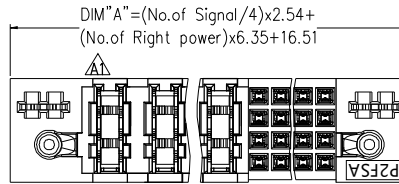


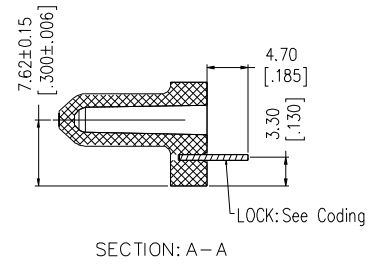
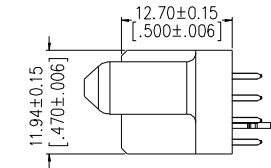
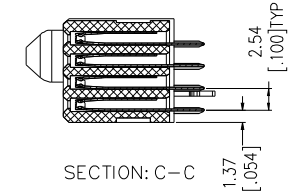
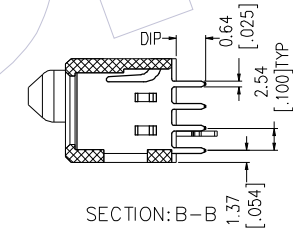
HSF

NOTES:

- Insulator material: PA9T+33%G.F, UL94 V-0;
- Terminal material: Copper Alloy;
Terminal Plating: Au/Sn Plated Over Nickel ;
- Rated Voltage: Signal 50V; Power 600V
- Rated Current: Power 30A; Signal 2.5A;
- Contact Resistance:
Power 0.7mΩ Max; Signal 20mΩ Max;
- Insulation Resistance: DC500V
Power 10000MΩ Min; Signal 500MΩ Min;
- Insulation Withstand Voltage:
Power 2500VAC/1min; Signal 1000VAC/1min ;
- Durability :200 cycling;
- Operation Temperature: -20°C to +105°C;



Recommended P.C.B Layout(Top Side)
(PCB BOARD TOLERANCE±0.05)



P2FS A - XXX - XX XX XX X X A 1

No. Right Power:
01=1Pin
20=20Pin

Tail Options(DIP Type):
A=3.43mm
B=2.29mm
C=4.19mm

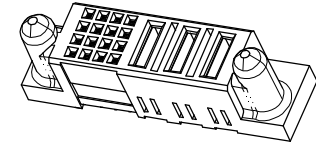
Packing:
A=Tray

No. Signal:
004=4Pin
008=8Pin
100=100Pin
104=104Pin
144=144Pin
148=148Pin

Power Contact Plated:
S3=10u" Gold /Tin
S4=15u" Gold /Tin
S5=30u" Gold /Tin
w3=10u" Gold /Matte Tin
w4=15u" Gold /Matte Tin
w5=30u" Gold /Matte Tin

Signal Contact Plated:
S3=10u" Gold /Tin
S4=15u" Gold /Tin
S5=30u" Gold /Tin
w3=10u" Gold /Matte Tin
w4=15u" Gold /Matte Tin
w5=30u" Gold /Matte Tin

Fixed Mode:
M: W/T Lock
N: W/O Lock



REV	DATE	MODIFICATION DESCRIPTION	CHANGE	OPERATION		DRAW XSR	DATE 2023/02/23	SCALE UNIT	FIT mm inch	PART NO. P2FSA-XXX-XXXXXXXXA1
				x.x	±0.40					
A1	2023/02/23	Correct VIEW	---	x.xx	±0.25	CHECK	DATE	SIZE	A4	TITLE: PSP Spacing A 180° DIP FEMALE (TYPE-2: 2.54Signal+Right Power)
A0	2018/10/10	NEW	---	x.xxx	±0.15	APPROVE	DATE	SHEET	1/2	Customer NO.
				Angle	± 3'			PROJ.		

WCON
Http: www.wcon.com

WCON-Dongguan
Tel: +86 769 85358920
Fax: +86 769 85358915
E-mail: sales@wcon.com

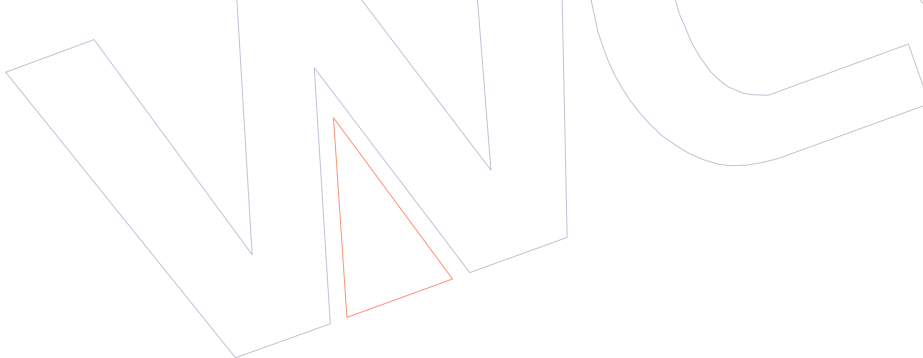
WCON-Kunshan
Tel: +86 512 57468408
Fax: +86 512 57468468
E-mail: salesks@wcon.com



Product Data Sheet

No.	P/N	No. Signal	No. Right Power	DIM "A"	DIM "B"	DIM "C"	DIM "E"	DIM "F"	DIM "H"
1	P2FSA-064-03XXXXXXA1	64	3	76.2	68.58	67.31	52.07	76.96	46.99
2	P2FSA-048-03XXXXXXA1	48	3	66.04	58.42	57.15	41.91	66.80	36.83
3	P2FSA-048-02XXXXXXA1	48	2	59.69	52.07	50.80	41.91	60.45	36.83
4	P2FSA-040-07XXXXXXA1	40	7	86.36	78.74	77.47	36.83	87.12	31.75
5	P2FSA-032-20XXXXXXA1	32	20	163.83	156.21	154.94	31.75	164.59	26.67
6	P2FSA-032-18XXXXXXA1	32	18	151.13	143.51	142.24	31.75	151.89	26.67
7	P2FSA-032-14XXXXXXA1	32	14	125.73	118.11	116.84	31.75	126.49	26.67
8	P2FSA-032-12XXXXXXA1	32	12	113.03	105.41	104.14	31.75	113.79	26.67
9	P2FSA-032-11XXXXXXA1	32	11	106.68	99.06	97.79	31.75	107.44	26.67
10	P2FSA-032-02XXXXXXA1	32	2	49.53	41.91	40.64	31.75	50.29	26.67
11	P2FSA-028-12XXXXXXA1	28	12	110.49	102.87	101.60	29.21	111.25	24.13
12	P2FSA-024-14XXXXXXA1	24	14	120.65	113.03	111.76	26.67	121.41	21.59
13	P2FSA-024-10XXXXXXA1	24	10	95.25	87.63	86.36	26.67	96.01	21.59
14	P2FSA-024-09XXXXXXA1	24	9	88.9	81.28	80.01	26.67	89.66	21.59
15	P2FSA-024-08XXXXXXA1	24	8	82.55	74.93	73.66	26.67	83.31	21.59
16	P2FSA-024-07XXXXXXA1	24	7	76.2	68.58	67.31	26.67	76.96	21.59
17	P2FSA-024-06XXXXXXA1	24	6	69.85	62.23	60.96	26.67	70.61	21.59
18	P2FSA-024-04XXXXXXA1	24	4	57.15	49.53	48.26	26.67	57.91	21.59
19	P2FSA-020-06XXXXXXA1	20	6	67.31	59.69	58.42	24.13	68.07	19.05

No.	P/N	No. Signal	No. Right Power	DIM "A"	DIM "B"	DIM "C"	DIM "E"	DIM "F"	DIM "H"
20	P2FSA-020-05XXXXXXA1	20	5	60.96	53.34	52.07	24.13	61.72	19.05
21	P2FSA-020-04XXXXXXA1	20	4	54.61	46.99	45.72	24.13	55.37	19.05
22	P2FSA-020-01XXXXXXA1	20	1	35.56	27.94	26.67	24.13	36.32	19.05
23	P2FSA-016-16XXXXXXA1	16	16	128.27	120.65	119.38	21.59	129.03	16.51
24	P2FSA-016-08XXXXXXA1	16	8	77.47	69.85	68.58	21.59	78.23	16.51
25	P2FSA-016-05XXXXXXA1	16	5	58.42	50.80	49.53	21.59	59.18	16.51
26	P2FSA-016-04XXXXXXA1	16	4	52.07	44.45	43.18	21.59	52.83	16.51
27	P2FSA-016-02XXXXXXA1	16	2	39.37	31.75	30.48	21.59	40.13	16.51
28	P2FSA-012-18XXXXXXA1	12	18	138.43	130.81	129.54	19.05	139.19	13.97
29	P2FSA-012-08XXXXXXA1	12	8	74.93	67.31	66.04	19.05	75.69	13.97
30	P2FSA-012-06XXXXXXA1	12	6	62.23	54.61	53.34	19.05	62.99	13.97
31	P2FSA-012-04XXXXXXA1	12	4	49.53	41.91	40.64	19.05	50.29	13.97
32	P2FSA-012-02XXXXXXA1	12	2	36.83	29.21	27.94	19.05	37.59	13.97
33	P2FSA-008-10XXXXXXA1	8	10	85.09	77.47	76.20	16.51	85.85	11.43
34	P2FSA-008-04XXXXXXA1	8	4	46.99	39.37	38.10	16.51	47.75	11.43
35	P2FSA-008-03XXXXXXA1	8	3	40.64	33.02	31.75	16.51	41.40	11.43
36	P2FSA-004-06XXXXXXA1	4	6	57.15	49.53	48.26	13.97	57.91	8.89
37	P2FSA-004-04XXXXXXA1	4	4	44.45	36.83	35.56	13.97	45.21	8.89



				OPERATION	DRAW	DATE	SCALE	FIT	PART NO.	 Http: www.wcon.com WCON-Dongguan Tel: +86 769 85358920 Fax: +86 769 85358915 E-mail: sales@wcon.com	WCON-Kunshan Tel: +86 512 57468408 Fax: +86 512 57468468 E-mail: salesks@wcon.com
			x.x	±0.40	XSR	2018/10/10	mm	P2FSA-XXX-XXXXXXA1			
			x.xx	±0.25	CHECK	DATE	inch	TITLE:			
A0	2018/10/10	NEW	x.xxx	±0.15	APPROVE	DATE	A4	PSP Spacing A 180° DIP FEMALE (TYPE-2: 2.54Signal+Right Power)			
REV	DATE	MODIFICATION DESCRIPTION	CHANGE	Angle DIM	± 3' TOL	DATE	SHEET	2/2	Customer NO.		