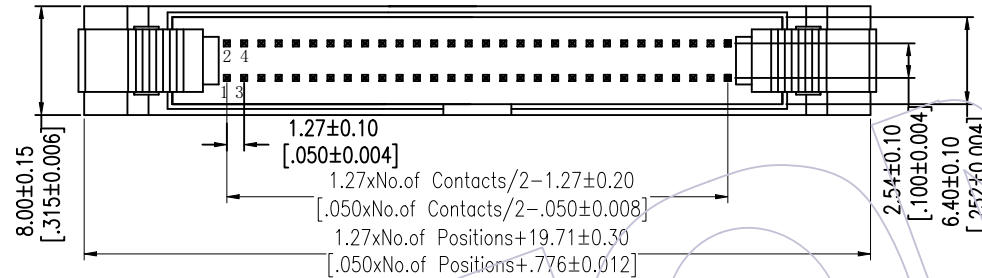
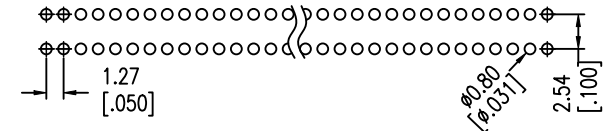


HSF

Recommended P.C.B Layout(Top Side)
(PCB BOARD TOLERANCE±0.05)

NOTES:
 Current Rating: 1.0AMP
 Contact Resistance: 20mΩ Max
 Withstand Voltage: 500V AC/DC
 Insulation Resistance: 1000MΩ Min
 Operation Temperature: -40°C to +105°C

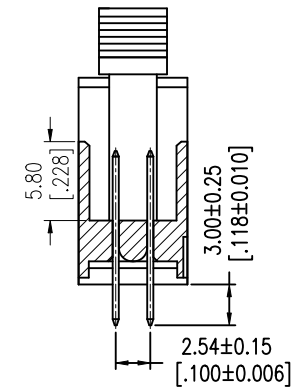
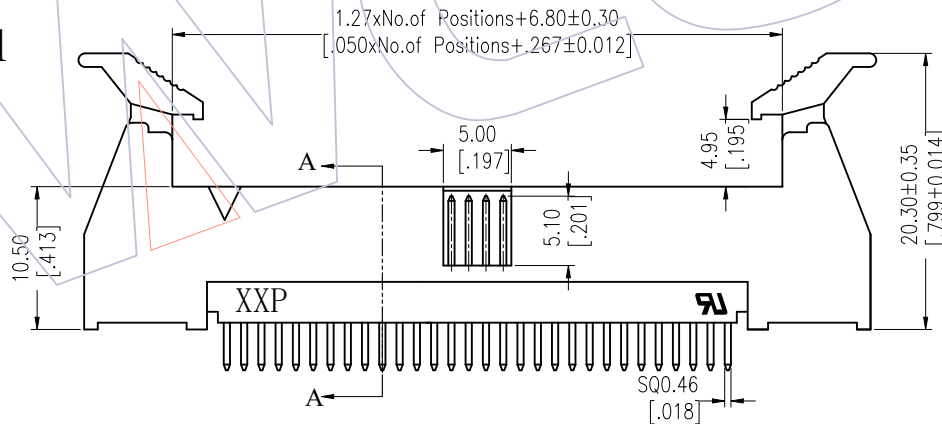
Contact Material:Brass
 Contact plating:Au Or Sn over Ni
 Insulator Material:PA9T+30%G.F UL94V-0



Ordering Information

3240- XX S XX B S X 1

No. of Pins	Contact Plating	Color Insulator	Packing
10 30	G0=Gold Flash	B=Black	T=Tube
12 32	G3=10u"Gold	U=Blue	
14 34	G4=15u"Gold	W=White	
16 40	G5=30u"Gold		
20 44	S0=Gold Flash/Tin		
24 50	S3=10u"Gold/Tin		
26 60	S4=15u"Gold/Tin		
64	S5=30u"Gold/Tin		
80			
100	SN=Tin		



Item	Pitch	Mating
Standard	1.27X2.54	5242
Alternate		

				OPERATION	DRAW	DATE	SCALE	FIT	PART NO.
				x.x ±0.40	JYHuang	2012/10/05	UNIT	mm	3240-XXSXXBSX1
				x.xx ±0.25	CHECK	DATE	SIZE	A4	TITLE:
				x.xxx ±0.15	APPROVE	DATE	SHEET	1/1	1.27*2.54 EJECTOR HEADER 180° DIP
A0	2012/10/05	NEW	-----	Angle ± 3'			PROJ.	⊕	Customer NO.
REV	DATE	MODIFICATION DESCRIPTION	CHANGE	DIM TOL					

WCON

Http: www.wcon.com

WCON-Dongguan Tel: +86 769 85358920 Fax: +86 769 85358915 E-mail: sales@wcon.com
 WCON-Kunshan Tel: +86 512 57468408 Fax: +86 512 57468468 E-mail: salesks@wcon.com