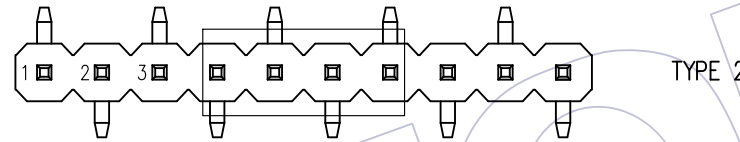
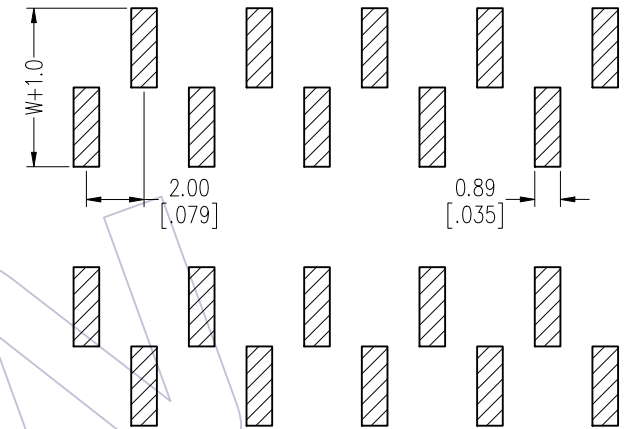
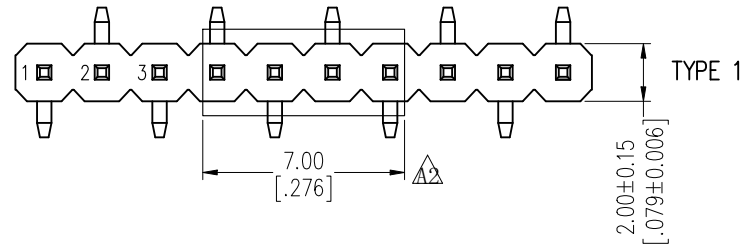


NOTES:  
 Rated Current: 2.0AMP.  
 Contact Resistance: 20mΩ Max.  
 Withstand Voltage: 500V AC/DC  
 Insulation Resistance: 1000MΩ Min.  
 Operation Temperature: -40°C to +125°C(GOLD)  
 -40°C to +105°C(TIN)  $\Delta$

Contact Material: Brass  
 Contact Plating: Au or Sn Over Ni  
 Insulator Material: PA9T+33%G.F UL94V-0 BK

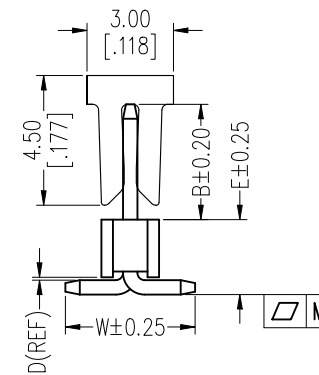
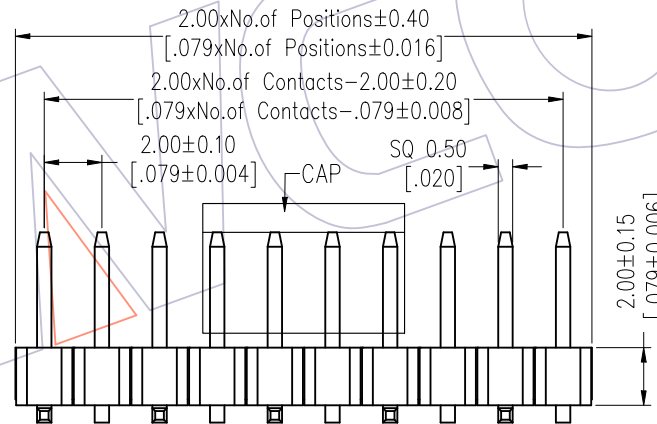
Recommended P.C.B Layout (Top Side)  
 (PCB BOARD TOLERANCE  $\pm 0.05$ )



### Ordering Information

1220-11 XX XX M XXX C R XX  $\Delta$

No. of Pins	Contact Plating	Pin Length	Insulator Material	Packing	Series No.
02-40	G0=Gold Flash	L=B+D+2.0+ $\frac{W}{2}$	C=PA9T	T=Tube	01-99
	G3=10u"Gold	Standard:063=6.3	P=Tube+CAP		
	G4=15u"Gold	073=7.3	R=Tape&Reel+CAP		
	G5=30u"Gold	083=8.3			
	S0=Gold Flash/Tin				
	S3=10u"Gold/Tin				
	S4=15u"Gold/Tin				
	S5=30u"Gold/Tin				
	SN=Tin				
	SM=Matte Tin				



Item	Pin Length	W	E	B	Mating
Standard	6.30	4.50	2.60	2.00	2220T 2221 2227T 2228
	7.30	4.50	2.60	3.00	2235
	8.30	4.50	2.60	4.00	2240 2243 2263 2272
	7.50	4.50	2.60	3.20	

TITLE	PART NO.	SPEC. $\Delta$
PIN 2-15P	16-25P	26-40P
TYPE 1	1220-11XXXXMXXXCRO1	DUAL/ODD PINS
M	0.10	0.15
TYPE 2	1220-11XXXXMXXXCRO2	DUAL PINS

OPERATION	DRAW	DATE	SCALE	Fit	PART NO.
A2	2019/07/20	Modify the CAP	$\Delta$	x.X ±0.40	1220-11XXXXMXXXCRRX $\Delta$
A1	2018/01/18	Modify P/N	$\Delta$	x.XX ±0.25	TITLE:
A0	2012/04/26	NEW	-----	x.XXX ±0.15	PH2.00 SINGLE ROW SMT H=2.0
REV	DATE	MODIFICATION DESCRIPTION	CHANGE	Angle ± 3°	Customer NO.
				DIM TOL	

**WCON**  
 Http: www.wcon.com  
 WCON-Dongguan Tel: +86 769 85358920  
 WCON-Kunshan Tel: +86 512 57468408  
 Fax: +86 769 85358915 Fax: +86 512 57468468  
 E-mail: sales@wcon.com E-mail: salesks@wcon.com