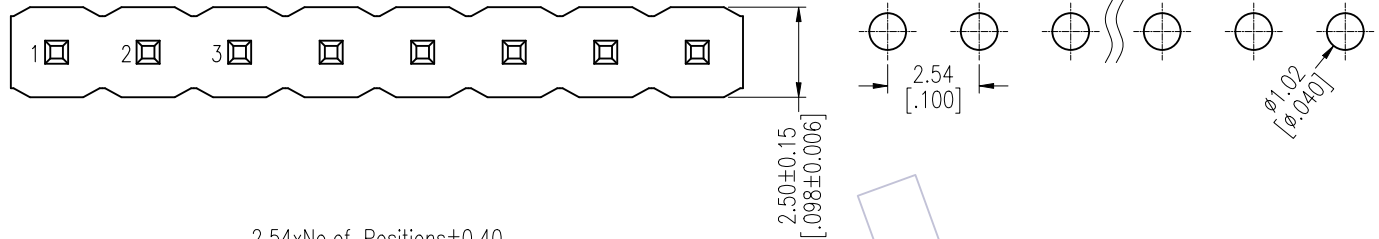


HSF

Recommended P.C.B Layout (Top Side)
(PCB BOARD TOLERANCE ±0.05)

NOTES:
 Rated Current: 3.0AMP.
 Contact Resistance: 20mΩ Max.
 Withstand Voltage: 1000V AC/DC
 Insulation Resistance: 1000MΩ Min.
 Operation Temperature: -40°C to +105°C

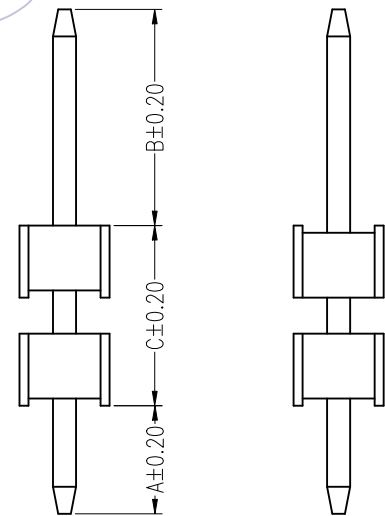
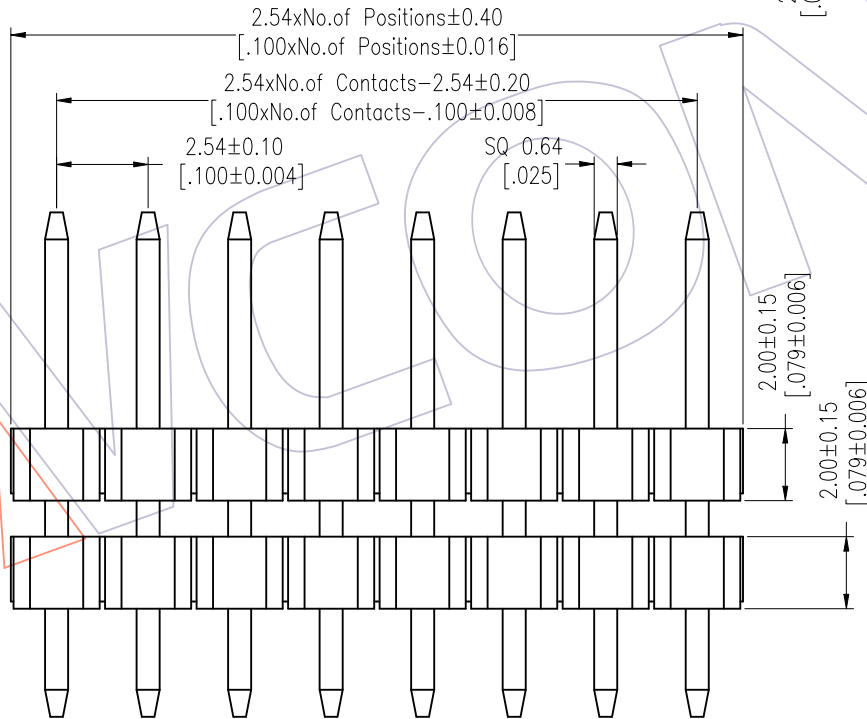
Contact Material: Brass
 Contact Plating: Au or Sn Over Ni
 Insulator Material: PA9T+33%G.F UL94V-0 BK



Ordering Information

1120-21 XX XX S XXX C 0 XX

No. of Pins	Contact Plating	Pin Length	Insulator Material	Packing	Series No.
02~40	G0=Gold Flash G3=10u"Gold G4=15u"Gold G5=30u"Gold S0=Gold Flash/Tin S3=10u"Gold/Tin S4=15u"Gold/Tin S5=30u"Gold/Tin SN=Tin SM=Matte Tin	L=A+B+C Standard:	C=PA9T	0=PE Bag T=Tube	01~99



TYPE 1

TYPE 2

Item	Pin Length	A	B	C	Mating
Standard	---	3.00	6.00	---	2171 2185
Alternate					

OPERATION	DRAW	DATE	SCALE	Fit	PART NO.
x.X ±0.40	Ruipeng	2018/01/22	UNIT mm		1120-21XXXXSXXXCOXX
x.XX ±0.25	CHECK	DATE	SIZE A4		TITLE:
x.XXX ±0.15	APPROVE	DATE	SHEET 1/1		PH2. 54 SINGLE ROW DOUBLE PLASTIC 180° H=2.0
Angle ± 3'			PROJ.		Customer NO.
DIM TOL					

WCON
 Http: www.wcon.com
 WCON-Dongguan Tel: +86 769 85358920
 WCON-Kunshan Tel: +86 512 57468408
 Fax: +86 769 85358915
 Fax: +86 512 57468468
 E-mail: sales@wcon.com
 E-mail: salesks@wcon.com

REV	DATE	MODIFICATION DESCRIPTION	CHANGE
A1	2018/01/22	Modify P/N	
A0	2012/05/07	NEW	-----