

NOTES:
 Current Rating:8A
 Voltage Rating:300V
 Contact Resistance:8milliohm Max
 Withstand Voltage:AC 1500V
 Insulation Resistance:1000Megohm Min
 Operation Temperature:-40°C to +105°C

Housing Material:PA66+30%GF(UL94V-0) $\Delta 2$
 Contact Material:Brass
 Inlay Material:Brass

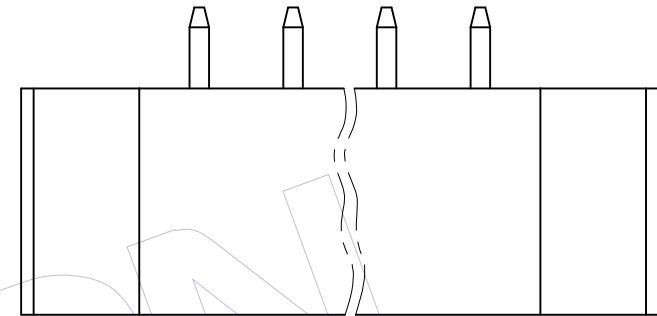
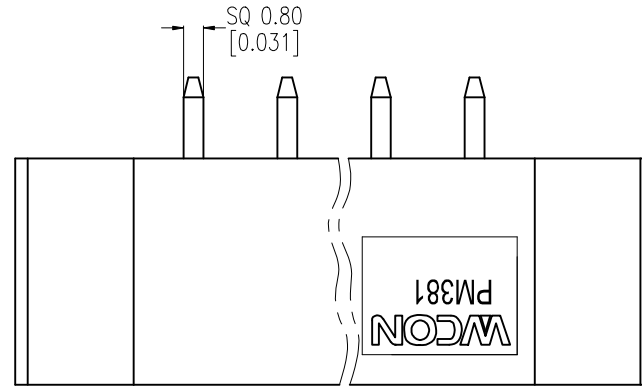
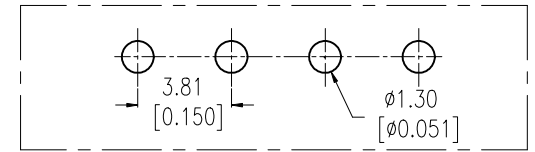
Ordering Information:

P M 381 - 1 S XX A SM 2 N $\Delta 5$
 M=Male Pitch No. of Pins 02-20P Contact Plated SM=Matte Tin Blank=W/T WCON N=W/O WCON Series No.

ITEM	Pitch	Mating
Standard	3.81	PF381
Alternate		

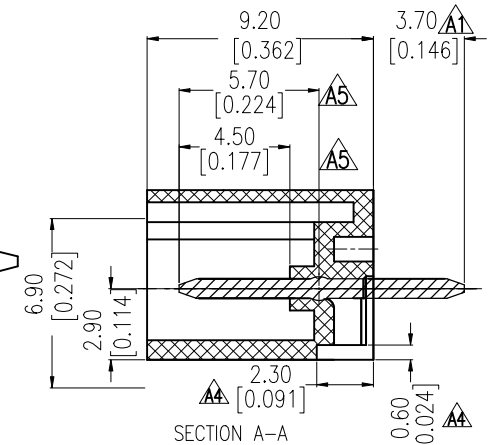
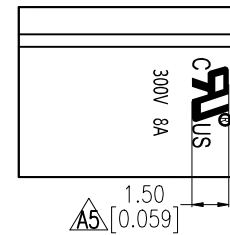
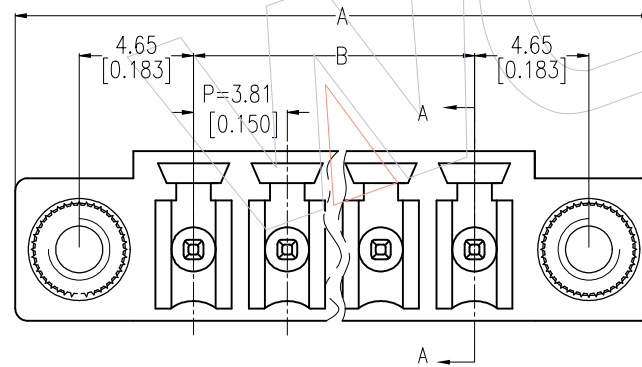
11P	51.90 ±0.30	38.10 ±0.30		
10P	48.09 ±0.30	34.29 ±0.30	20P	86.19 ±0.40 72.39 ±0.40
9P	44.28 ±0.30	30.48 ±0.30	19P	82.38 ±0.40 68.58 ±0.40
8P	40.47 ±0.30	26.67 ±0.30	18P	78.57 ±0.40 64.77 ±0.40
7P	36.66 ±0.20	22.86 ±0.20	17P	74.76 ±0.40 60.96 ±0.40
6P	32.85 ±0.20	19.05 ±0.20	16P	70.95 ±0.40 57.15 ±0.40
5P	29.04 ±0.20	15.24 ±0.20	15P	67.14 ±0.40 53.34 ±0.40
4P	25.23 ±0.20	11.43 ±0.20	14P	63.33 ±0.30 49.53 ±0.30
3P	21.42 ±0.20	7.62 ±0.20	13P	59.52 ±0.30 45.72 ±0.30
2P	17.61 ±0.20	3.81 ±0.10	12P	55.71 ±0.30 41.91 ±0.30
位数	A	B	位数	A B

Recommended P.C.B Layout(Top Side)
 (PCB BOARD TOLERANCE±0.05)



W/T WCON

W/O WCON $\Delta 5$



REV	DATE	MODIFICATION DESCRIPTION	CHANGE	OPERATION	DRAW	DATE	SCALE	FIT	PART NO.
A5	2020/11/14	Add UL Logo & DIM; Add W/O WCON SPEC&P/N $\Delta 5$	XSR	OPERATION	DRAW	2020/11/14	SCALE	FIT	PM381-1SXXASM2(N) $\Delta 5$
A4	2018/03/12	Modify $\Delta 5$	XSR	x.X ±0.40	CHECK		UNIT	mm	TITLE: 3.81mm Pitch Male Pluggable Terminal Blocks
A3	2014/04/15	Modify The Dimension $\Delta 3$		x.XX ±0.25			SIZE	A4	
A0	2012/05/15	NEW		x.XXX ±0.15	APPROVE		SHEET	1/1	
				Angle ± 3°			PROJ.		Customer NO.
				DIM TOL					

WCON

Http: www.wcon.com

WCON-Dongguan Tel: +86 769 85358920
 WCON-Kunshan Tel: +86 512 57468408
 Fax: +86 769 85358915
 Fax: +86 512 57468468
 E-mail: sales@wcon.com
 E-mail: salesks@wcon.com