

# HSF

Recommended P.C.B Layout(Top Side)  
(PCB BOARD TOLERANCE±0.05)

NOTES:  
 Current Rating: 3.0AMP  
 Contact Resistance: 20mΩ Max  
 Withstand Voltage: 1000V AC/DC  
 Insulation Resistance: 1000MΩ Min  
 Operation Temperature: -40℃ to +105℃

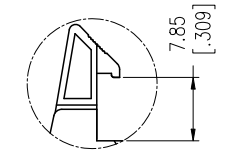
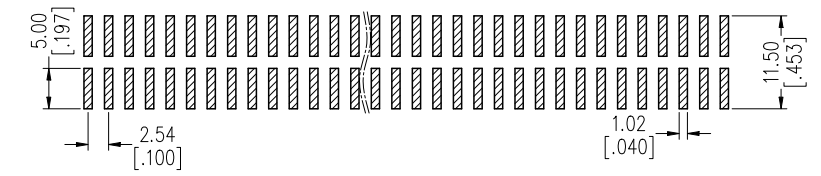
Contact Material: Brass  
 Contact plating: Au Or Sn over Ni  
 Insulator Material: PA9T+30%G.F UL94V-0

06P-18P Without Slot "A" and "B"  
 20P-58P Without Slot "A", With Slot "B"  
 60P-64P With Slot "A" and "B"

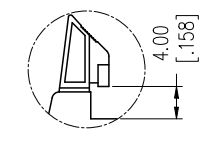
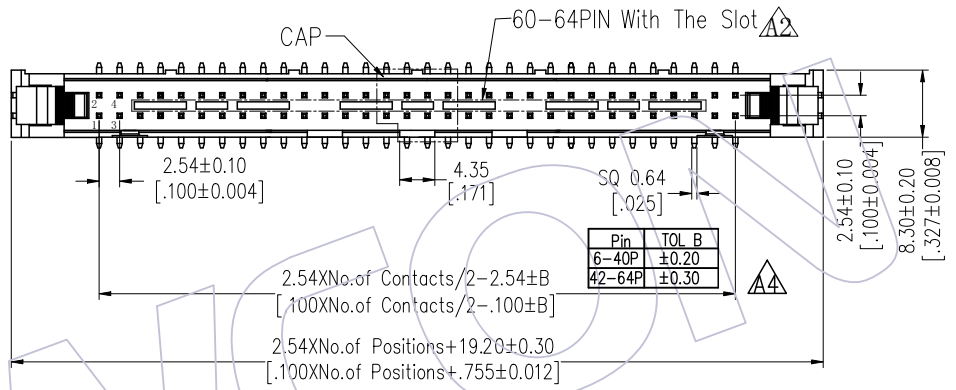
## Ordering Information

3210 - XX M XX B X X 1

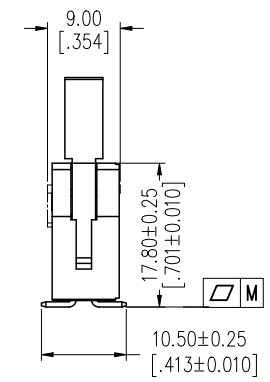
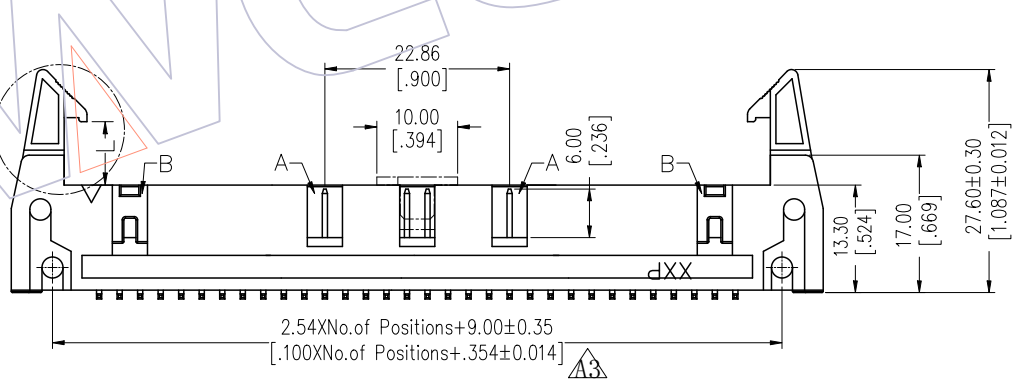
No. of Pins	Contact Plating	Insulator Color	Latch Type	Packing
06 24	G0=Gold Flash	B=Black	L=Long Latch	T=Tube
08 26	G3=10u"Gold		S=Short Latch	P=Tube+CAP
10 30	G4=15u"Gold		N=Without Latch	
12 34	G5=30u"Gold			
14 40	S0=Gold Flash/Tin			
16 50	S3=10u"Gold/Tin			
18 60	S4=15u"Gold/Tin			
20 64	S5=30u"Gold/Tin			
	SN=Tin			



Long Latch



Short Latch



Item	Pitch	Mating
Standard	2.54	5211
Alternate		

PIN(PerRow)	6-20P	24-40P	50-64P
	M	0.10	0.12

REV	DATE	MODIFICATION DESCRIPTION	CHANGE	OPERATION	DRAW	DATE	SCALE	FIT	PART NO.
A5	2023/02/17	Add Flatness	△5	Du Ying	OPERATION	2023/02/17	UNIT	mm	3210-XXMXXBXX1
A4	2022/01/12	MODIFY: 2.54XNo. of Contacts/2-2.54±B	△A	Du Ying	CHECK		SIZE	A4	TITLE:
A3	2019/01/04	Modify	△A	Ding	CHECK		SHEET	1/1	2.54 EJECTOR HEADER SMT
A0	2012/10/08	NEW	-----		APPROVE		PROJ.		Customer NO.
				Angle ± 3°					
				DIM TOL					

**WCON**  
 Http: www.wcon.com  
 WCON-Dongguan Tel: +86 769 85358920 Fax: +86 769 85358915 E-mail: sales@wcon.com  
 WCON-Kunshan Tel: +86 512 57468408 Fax: +86 512 57468468 E-mail: salesks@wcon.com