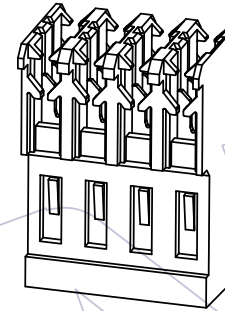
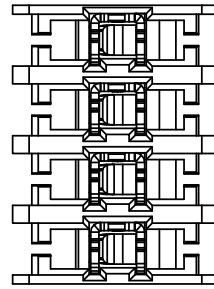


# HSF

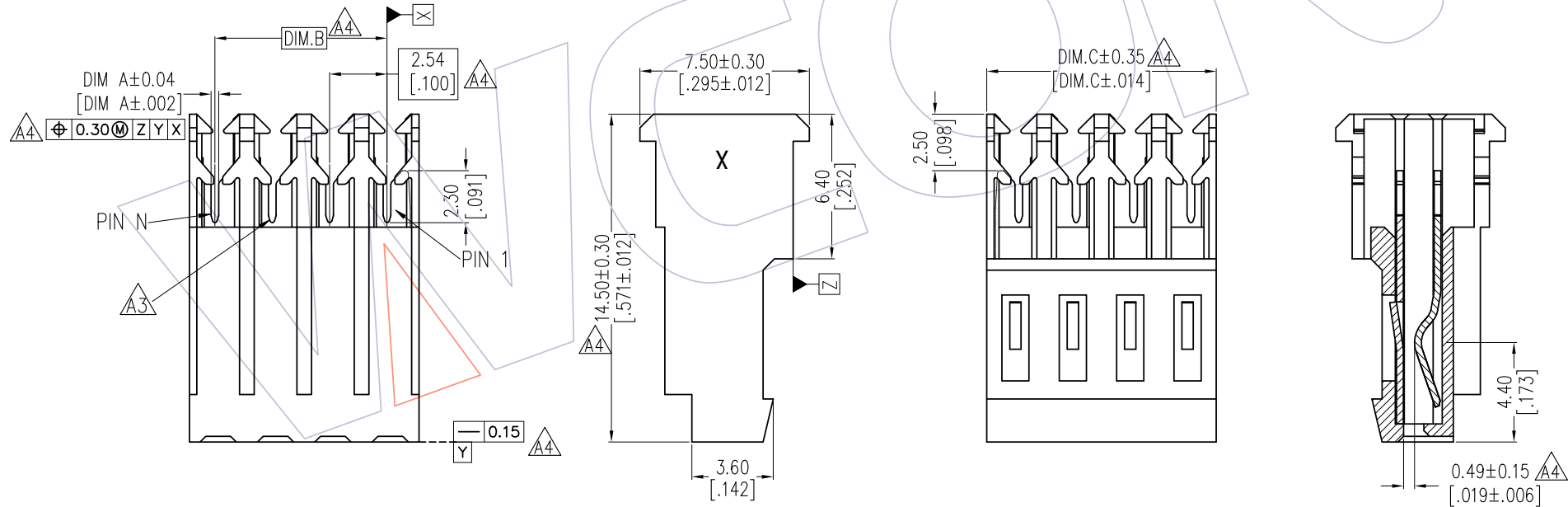
## NOTES:

Current Rating: 3.0~4.0AMP  
 Voltage Rating: 300V AC  
 Contact Resistance: 10mΩ Max  
 Withstand Voltage: 750V AC/DC/Minute  
 Insulation Resistance: 1000MΩ Min  
 Operation Temperature: -55℃ to +105℃

Contact Material: Copsy Alloy  
 Contact plating: See Ordering Information  
 Insulator Material: PA66 UL94V-2



3D VIEW



A4	2020.06.28	Modify Dimension Control Mode	Andrey	OPERATION	DRAW	DATE	SCALE	FIT	PART NO.
A3	2020.04.25	Modify Terminal Slot Spec	Andrey	x.x ±0.40	Andrey	2020.06.28	UNIT	mm	WF2545-XXHITXXXT02
A2	2020.03.10	Modify P/N	XSR	x.xx ±0.25	CHECK	DATE	SIZE	A4	TITLE:
A0	2016.10.20	NEW	Ding	x.xxx ±0.15	APPROVE	DATE	SHEET	1/2	2.54mm Wafer CONN, IDC Type
REV	DATE	MODIFICATION DESCRIPTION	CHANGE	Angle ± 3°			PROJ.	1/2	Through Out Type, W/O Fool-proof
				DIM TOL					Customer NO.



Http: www.wcon.com

WCON-Dongguan	WCON-Kunshan
Tel: +86 769 85358920	Tel: +86 512 57468408
Fax: +86 769 85358915	Fax: +86 512 57468468
E-mail: sales@wcon.com	E-mail: salesks@wcon.com

HSF

### Ordering Information $\Delta$

**WF 2545- XX HI T XX X XX T 0 2**

Company Code

Product Series Code

254= 2.54mm Pitch

5= Fifth series

Wire Size

28=28AWG

26=26AWG

24=24AWG

22=22AWG

Type

IDC Type

Type of Assemble Cable

T=Through Out Type

No. of Pins

02P-30P

Series No.

2:W/O Fool-proof

Packing

0=PE Bag

Color

T= Natural

Contact Plating

Blank: Full Bright Tin  
100u"Min Plated Overall

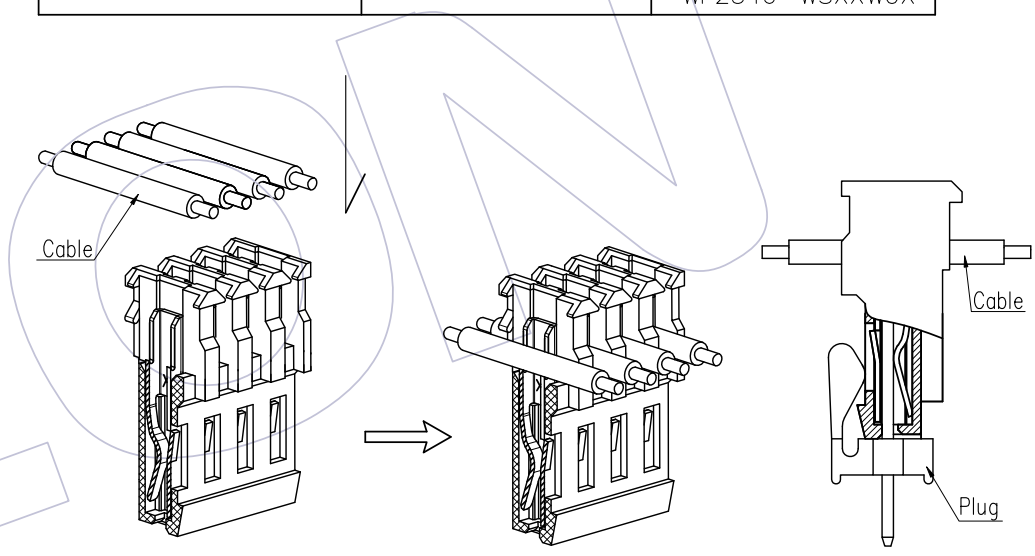
Contact Material

B=Brass

P=Phosphor bronze

FEMALE ASSEMBLY	ADAPTATION MALE ASSEMBLY	
WF2545-XXHITXXXT02	WF2541-WRXXE0X	WF2544-WSXXW0X
	WF2541-WRHXXT0X	WF2544-WRXXW0X
	WF2541-WSXXE0X	WF2546-WRXXW0X
		WF2546-WSXXW0X

11P	25.40	27.94	21P	50.80	53.34			
10P	22.86	25.40	20P	48.26	50.80	30P	73.66	76.20
9P	20.32	22.86	19P	45.72	48.26	29P	71.12	73.66
8P	17.78	20.32	18P	43.18	45.72	28P	68.58	71.12
7P	15.24	17.78	17P	40.64	43.18	27P	66.04	68.58
6P	12.70	15.24	16P	38.10	40.64	26P	63.50	66.04
5P	10.16	12.70	15P	35.56	38.10	25P	60.96	63.50
4P	7.62	10.16	14P	33.02	35.56	24P	58.42	60.96
3P	5.08	7.62	13P	30.48	33.02	23P	55.88	58.42
2P	2.54	5.08	12P	27.94	30.48	22P	53.34	55.88
PIN	DIM.B	DIM.C	PIN	DIM.B	DIM.C	PIN	DIM.B	DIM.C



$\Delta$  BEFORE ASSEMBLE CABLE      AFTER ASSEMBLE CABLE      MATING

Old Part NO.	New Part NO.	Wire Size:AWG(mm <sup>2</sup> )	DIM.A	CONN. Stripe Color	Current Rating: AMPS
	WF2545-28HITXXBT02	28AWG(0.08-0.09)	0.20	GREEN	3.0
WF2545B-HIXXW04	WF2545-26HITXXBT02	26AWG(0.12-0.15)	0.28	BLUE	3.3
WF2545B-HIXXW05	WF2545-24HITXXBT02	24AWG(0.2)	0.34	BLACK	3.5
WF2545B-HIXXW06	WF2545-22HITXXPT02	22AWG(0.3-0.4)	0.48	RED	4.0

REV	DATE	MODIFICATION DESCRIPTION	CHANGE	OPERATION	DRAW	DATE	SCALE	FIT	PART NO.
A4	2020.06.28	Modify Dimension Control Mode	Andrey	x.x	Andrey	2020.06.28	UNIT	mm	WF2545-XXHITXXXT02
A3	2020.04.25	Modify Terminal Slot Spec	Andrey	x.xx	CHECK	DATE	SIZE	A4	TITLE:
A2	2020.03.10	Modify P/N	XSR	x.xxx	APPROVE	DATE	SHEET	2/2	2.54mm Wafer CONN,IDC Type
A0	2016.10.20	NEW	Ding	Angle			PROJ.		Through Out Type,W/O Fool-proof
				DIM					Customer NO.

**WCON**  
 Http: www.wcon.com

WCON-Dongguan      WCON-Kunshan  
 Tel: +86 769 85358920      Tel: +86 512 57468408  
 Fax: +86 769 85358915      Fax: +86 512 57468468  
 E-mail: sales@wcon.com      E-mail: salesks@wcon.com