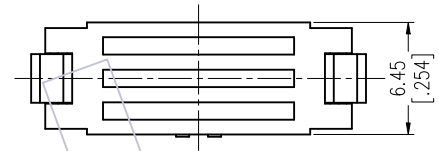
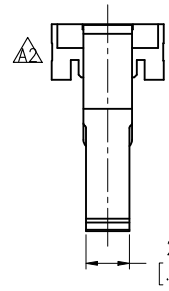
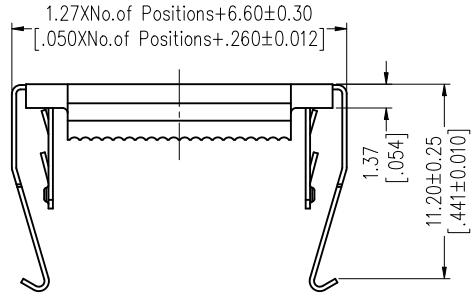


NOTES:

Current Rating: 1.0AMP
 Contact Resistance: 30mΩ max
 Withstand Voltage: 500V AC/DC
 Insulation Resistance: 1000MΩ min
 Operation Temperature: -40°C to +105°C

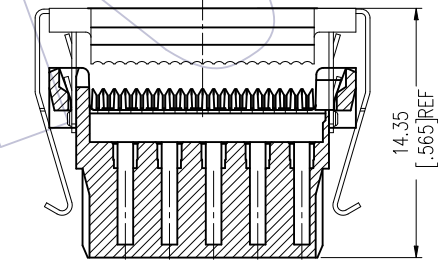
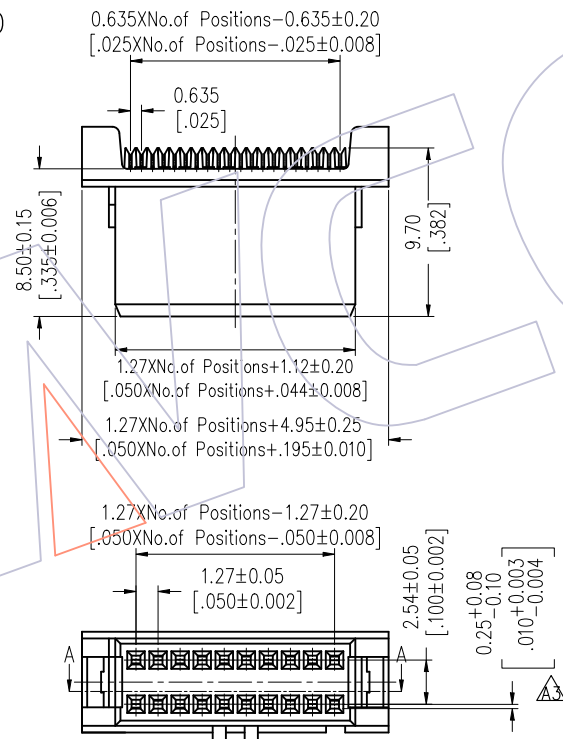
Contact Material: Phosphor Bronze
 Contact plating: Au Or Sn over Ni
 Insulator Material: Body: LCP+30%G.F UL94V-0
 Cover: PBT+30%G.F UL94V-0



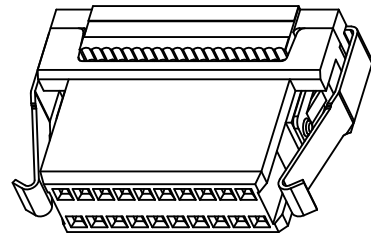
Ordering Information

5243- XX Y P XX B X 01

No. of Pins Contact Plating Insulator Shape
 S0=Gold Flash/Tin W: With Bump
 S3=10u"Gold/Tin N: Without Bump
 S4=15u"Gold/Tin
 S5=30u"Gold/Tin
 SN= Tin



SECTION A-A



| Item | Pitch | Mating |
|-----------|-----------|--------|
| Standard | 1.27X2.54 | 3144 |
| Alternate | | |

| REV | DATE | MODIFICATION DESCRIPTION | CHANGE | OPERATION | DRAW | DATE | SCALE | FIT | PART NO. |
|-----|------------|---------------------------------------|--------|-------------|---------|------------|-------|--------------|----------------------------|
| A3 | 2019/10/23 | Modify | △ | OPERATION | DRAW | 2019/10/23 | UNIT | mm | 5243-XXYPXXBX01 |
| A2 | 2019/03/21 | Modify | △ | X.X ±0.40 | SU | DATE | SIZE | A4 | |
| A1 | 2013/08/12 | Modify the Plated Gold/Ni to Gold/Tin | △ | X.XX ±0.25 | CHECK | DATE | SHEET | 1/1 | TITLE: |
| A0 | 2012/10/10 | NEW | ---- | X.XXX ±0.15 | APPROVE | DATE | PROJ. | Customer NO. | 1.27*2.54mm IDC WITH LATCH |
| | | | | Angle ± 3° | | | | | |
| | | | | DIM TOL | | | | | |

WCON
 Http: www.wcon.com
 WCON-Dongguan WCON-Kunshan
 Tel: +86 769 85358920 Tel: +86 512 57468408
 Fax: +86 769 85358915 Fax: +86 512 57468468
 E-mail: sales@wcon.com E-mail: salesks@wcon.com