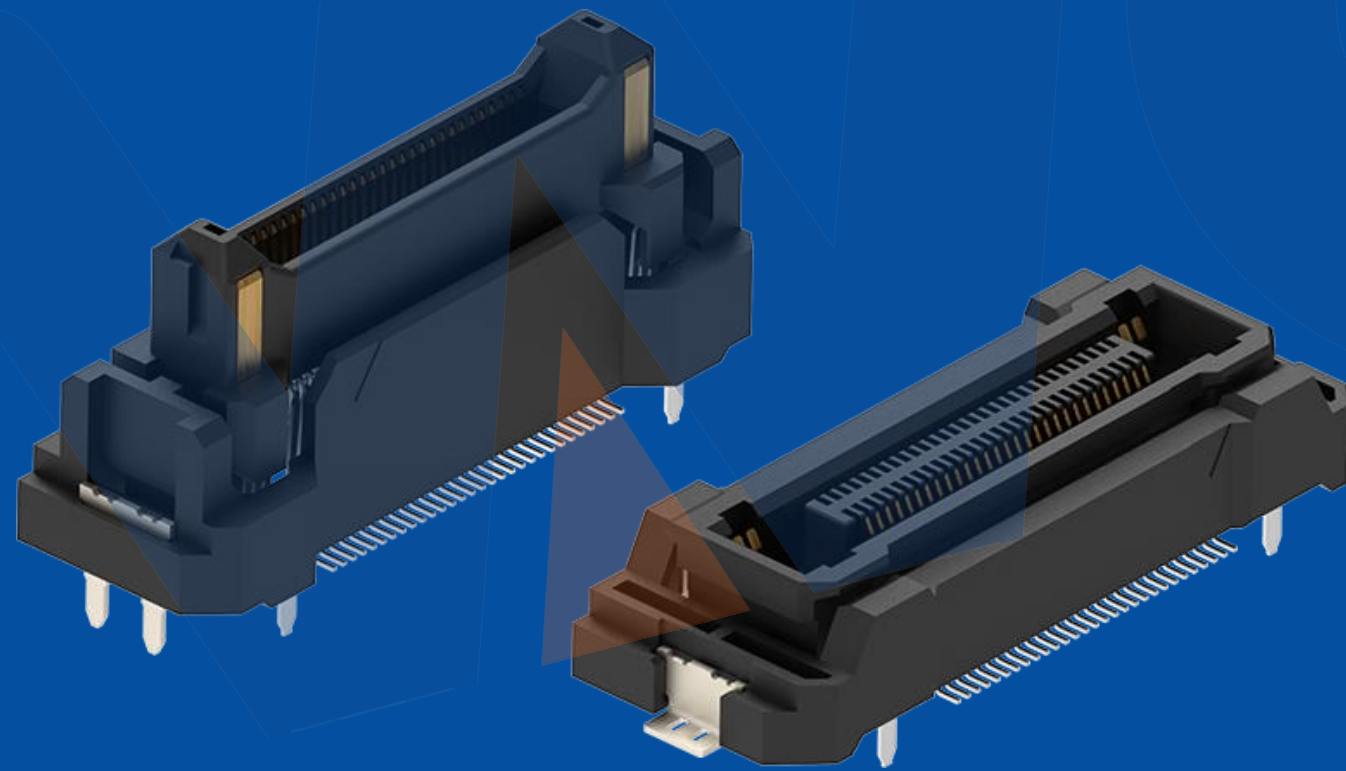




Stock # : 301328

WCON Electronics



High end precision connectors and customer solution Service Provider

WWW.WCON.COM



目录

CONTENTS



01

About WCON



04

Quality Assurance



02

Design Innovation



05

Business Capability



03

Intelligent Processing



06

After-sales Service





2025

PART ONE
About WCON

PART
01

Company Profile

High end precision connectors and customer solution Service Provider



WCON (founded in Nov.2002), is a public listed company specializing in high-end precision Board to Board and Wire to Board connectors, cable assembly. Main focusing on providing the R&D, Production and Sales of connectors and cables for industrial control, Data center, Server, Automotive electronics, New energy and other industries.

At present, the company has 20+ product series with more than 50,000+ active part numbers, more than 100,000+ series of products reserve number, which are widely used in industrial automation control, rail transportation, low altitude aircraft, electric power control, data center, electric car size 'three electric' system, ADAS, intelligent cockpit, photovoltaic inverter system and other fields. Inverter system and the new connector fields...

IATF16949

ISO9001

ISO14001

ISO45001

ISO50001

D-U-N-S[®]

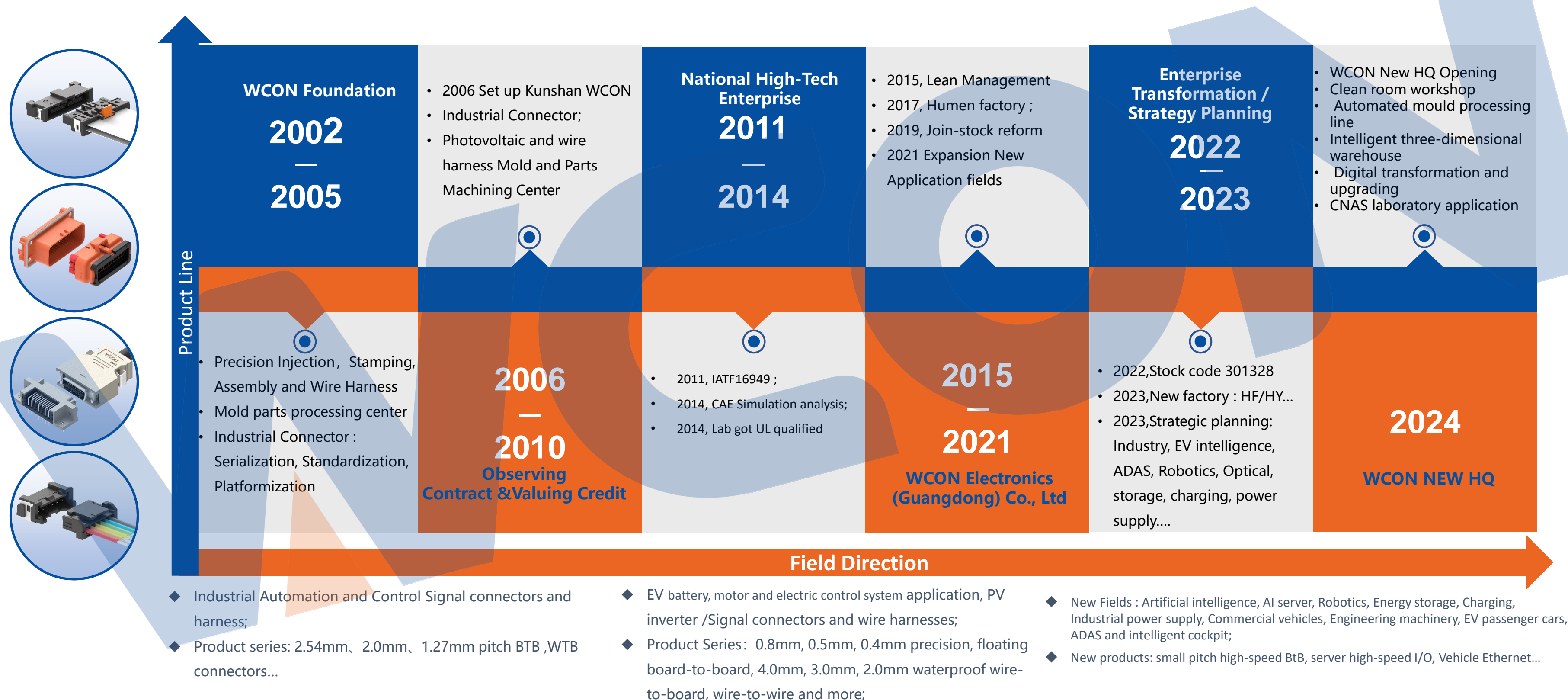
UL/CUL

TÜV/CE

ROHS/REACH

- National High-Tech Enterprise
- China Well-known Trademark Enterprise
- AAA level Enterprise of Observing Contract and Valuing Credit
- Professional, Proficient, Special, New Enterprise
- Guangdong Innovative Enterprise





Organization Chart

High end precision connectors and customer solution Service Provider



WCON ELECTRONICS (GUANGDONG) CO.,LTD **HQ** WCON (301328)

Wholly-owned

WCON Kunshan Electronics Co., Ltd.

WCON Hengyang Electronics Co., Ltd.

WCON Electronics (Thailand) Co., Ltd.

WCON Hardware Electronics Limited (Hongkong)

WCON Electronics Limited (Singapore)

Controlling stake

WCON Dongguan Automotive Electronics Co., Ltd.

WCON Hefei Electronics Co., Ltd.

WCON Electronics Europe S.R.L (Italy)

GENERAL MANAGER

Research Institute

R&D Center

Engineering Center

Project Management Dept.

Manufacturing Center

Quality Center

Financial Center

Operation Sales Center

Cost Management Dept.

Purchasing Dept.

IT Dept.

HR Dept.

Total number of people: over 1,600.

• Dongguan Headquarter: 1080

• Wcon Automotive Electronics: 100

• Wcon Kunshan: 320

• Wcon Hefei: 80

• Wcon Hengyang: 50

• Wcon Europe (Italy) : 2

◆ WCON ELECTRONICS (Dongguan)

- Wcon Automotive Electronics
- Wcon Interconnection Technology
- Wcon Kunshan
- Wcon Hefei
- Wcon Hengyang

- Wcon Hongkong
- Wcon Europe (Italy)
- Wcon Singapore
- Wcon Thailand (Under construction...)



Dongguan (Nov.2002)
Building area: 60,228 m²



Kunshan (Jul.2006)
Building area: 46,000 m²



Hefei (Oct.2022)
Building area: 1,800 m²



Hengyang (Nov.2022)
Building area: 4,000 m²



Thailand (Under construction...)
Building area: 37,000 m²

Wcon: “China+1” Overseas factory on-going Progress:

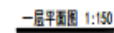
- 2022-2023, Southeast Asian countries investigation;
- 12/2023, Confirmed the Site selection in Pachinburi Thailand;
- 05/2024, BOI preparation and registration in Thailand;
- 07/2024, BOI approved, Factory's construction started ;
- Q4/2025, Factory completed, Set up the production line and prepare operation ;

WCON Thailand Plant in Rojana Prachinburi:

Progress进程	ETD期望时间	Status状态
Southeast Asian countries investigation and Preparation of Business Plan 境外计划与东南亚考察	End of 2023	Done
Confirmed the Site selection in Pachinburi Thailand 选址泰国巴真武里府	Dec 2023	Done
Asset and Land Purchase Agreement(46350m ²), Apply for Business License & Tax Registration 购置土地4.6万平方米，申请许可证与登记税号	Aug 2024	Done
Geological Prospecting & Plant Design 地址勘测与工厂设计	Dec 2024	Done
Plant Construction & Decoration 工厂建设与装修	Aug 2025	In progress
Plant Acceptance Testing (AT) & Fire Protection Approval 工厂验收与消防审批	Oct 2025	Plan
Equipment Installing & Hiring and Training 设备入场与人员招募及培训	Nov 2025	Plan
Apply for ISO Certifications & Prepare Operation 申请工厂证书与预备投产	End of 2025	Plan

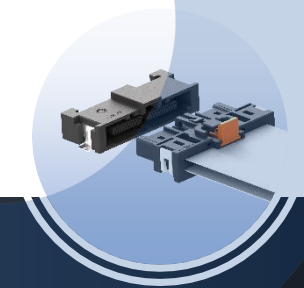
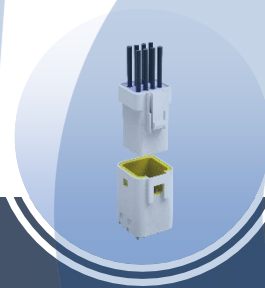
📍 泰国巴真武里府西玛铺县华瓦区洛加纳工业园
VG3C+H57, Hua Wa, Si Maha Phot District, PrachinBuri25140, Thailand





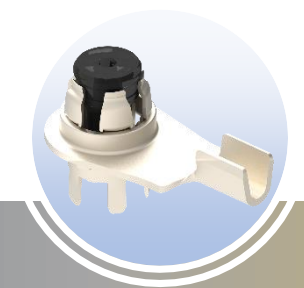
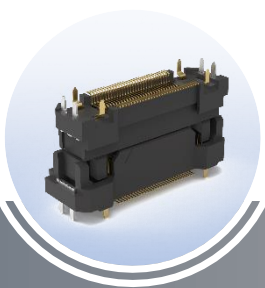
2024

- **Green energy vehicles** : 0.50mm power-signal mixed floating BTB , FPC & FFC lightweight BMS connectors, Small pitch WTW waterproof connectors, 800V Automotive Platform Connectors
- **Photovoltaic Application** : Solar photovoltaic C104 series, junction box series
- **Industrial Control** : high-speed BTB, WTB, circular connectors
- **Others** : Customized Joined research projects



2025

- **Green Energy Vehicles** : Miniaturized, Integrated, high-performance series connectors; HSD high-speed signal connectors, Fakra, Mini Fakra, Vehicle Type-C Cable, CCS Power management system;
- **Industrial Automation and Control** : Small pitch, High-speed, Power signal mixed series connectors,
- **Green energy** : Small size, High current, Waterproof and anti-UV series connectors, etc.
- **New Fields** : Artificial intelligence, AI server, Robotics, Energy storage, Charging, Industrial power supply, Commercial vehicles, Engineering machinery, EV passenger cars, ADAS and intelligent cockpit;
- **New products** : small-pitch high-speed board-to-board, high-speed I/O for servers, Vehicle Ethernet wire harness ...;



202X



2025

PART TWO

Design Innovation

PART
02

◆ Professional R&D Team : 70+

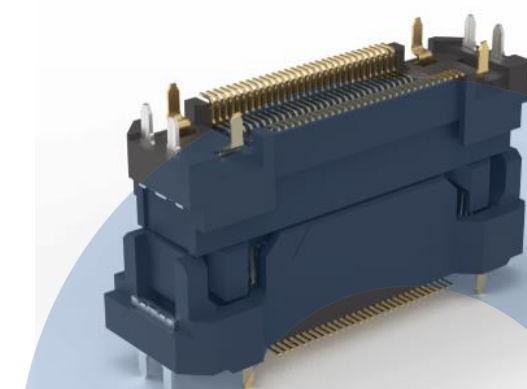
- Research Institute : 7+
- Product Design : 23+
- Product Engineer: 18+

◆ Rigorous design procedures, Scientific simulation analysis

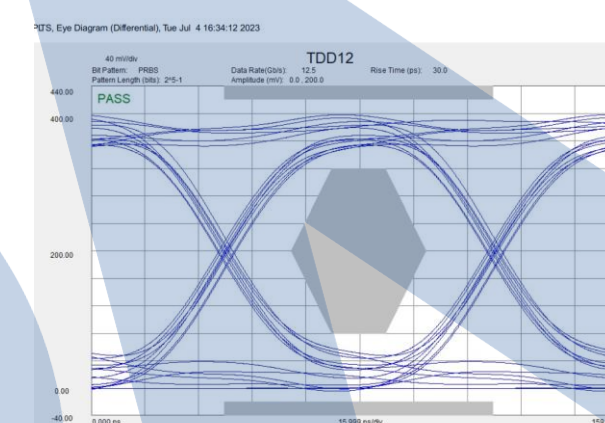
- APQP process control
- Current-carrying temperature rise simulation
- High-speed high-frequency simulation
- mechanical stress strain

◆ Simulation (CAE)

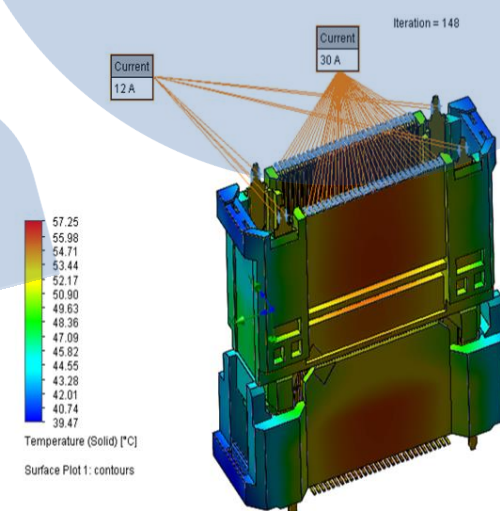
CAE is a sharp tool for product design, product improvement, and product optimization; it provides comprehensive analysis and performance level information, shorten the development cycle and reduce the overall cost of the product.



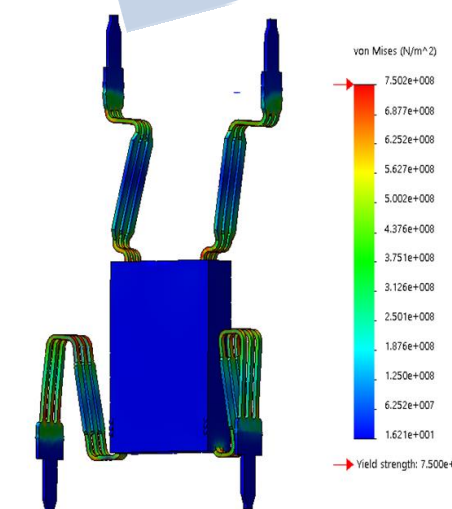
Structure, assembly, tolerance analysis



Rigorous Structure Analysis



Professional Simulation analysis of Mechanical stress and Temp rise



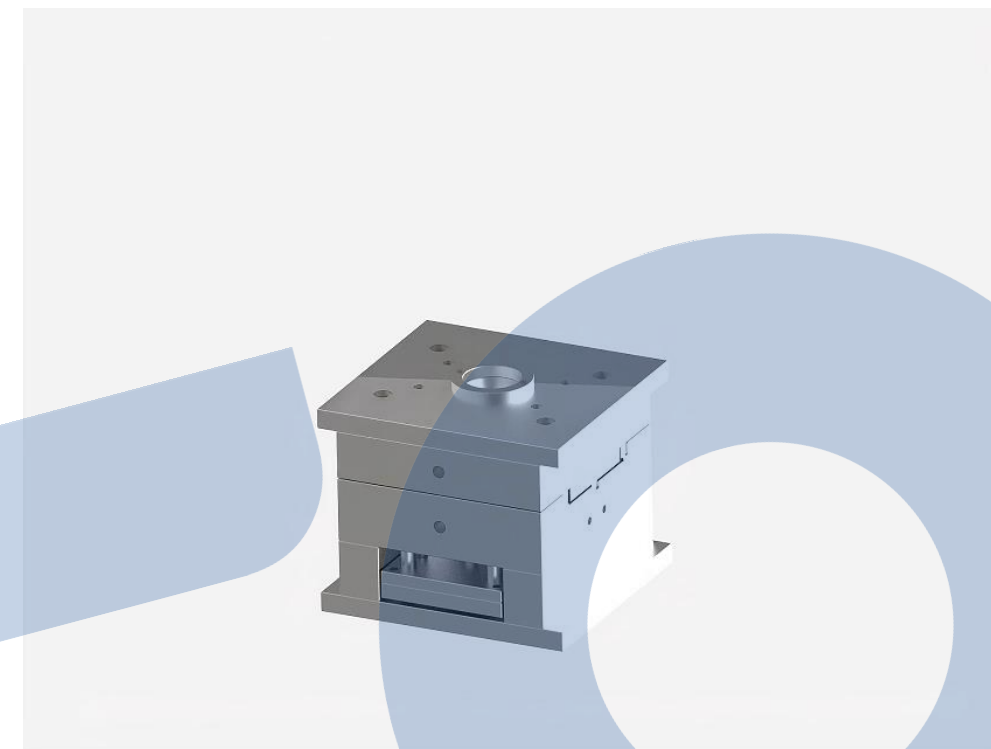
Product Mutual Matching simulation Analysis

Tooling Design and Fabrication Team : 34

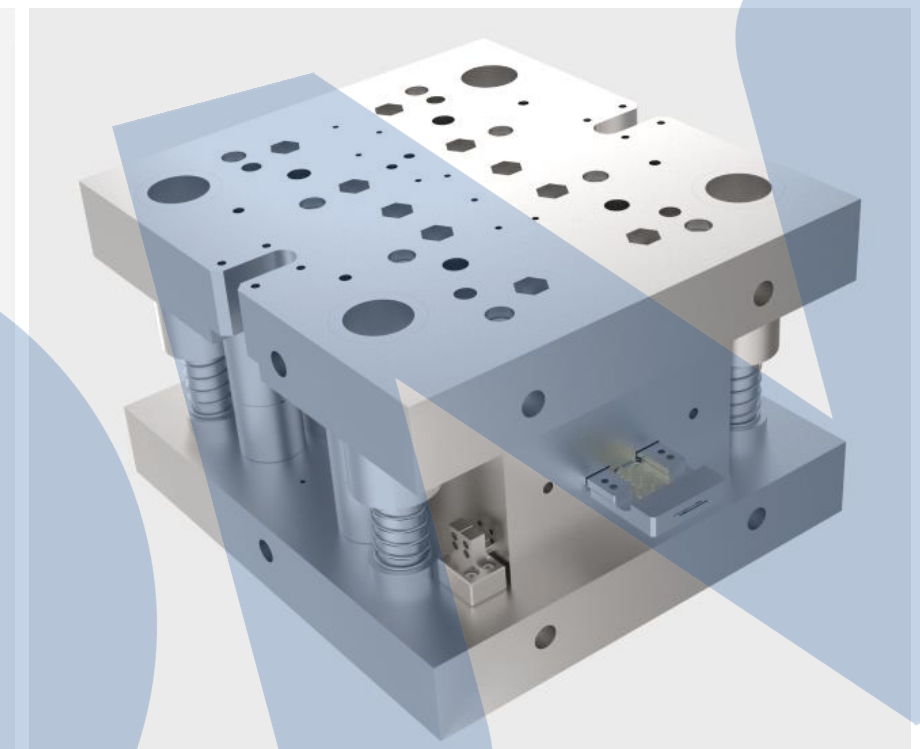
- Mold design: 12
- Mold processing : 15
- Auto assemble: 7

Using CAD, UGNX (3D), MOLDEX3D, VISI 3D and other software, from the scheme → design → processing and manufacturing of the whole process, to provide professional design guidance, precision machining process, the manufacture of hardware stamping molds, precision plastic molding molds, excellence, to provide customers with high-quality products and services.

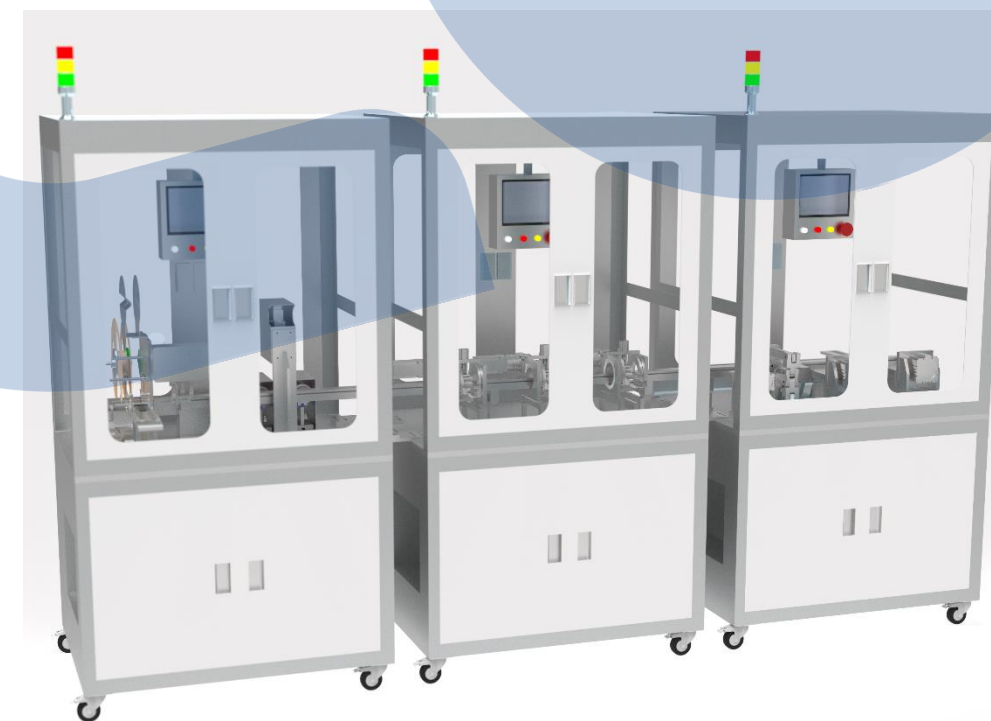
Practicing professional design and scientific management.



Plastic Mold



Stamping Die



Auto Assembly



Mold Processing

Strengthen the R&D technology, scene application, and continuously maintain technological advancement, innovation, and practicality.

◆ Patents : 237+ (Till 2024/09)

- 37+ Invention patents;
- 200+ Utility Model & outer appearance Patents ;
- 10 Industry group standards (edited 6 items)

37

Inventions

194

Utility Model

6

Appearance

12

Industry Standard

2

Software Copyright

36

In Progress





2025

PART THREE

Intelligent Processing

PART
03

◆ Mold processing equipment (250+)

- **Wire cutting:** Seibu, Agie Charmilles $\pm 0.002\text{mm}$; Ra 0.15;
- **EDM:** Mitsubishi, Makino MAKINO, Agie Charmilles;
- **CNC :** MAKINO, Mikron, YASHIDA;
- **Grinding :** Mitsui, Okamoto, Yuqing, WAIDA PG Optical Grinder, WAIDA JG Co-ordinate Grinder: $\pm 0.001\text{mm}$; Ra0.10, Slot Width $0.15\text{m} \times 5.0\text{mm}$;
- **CNC+EDM Robotics Automated Mold Processing**
- **Mold material:** CD650, ASP23, SKH-9; Viking SKD61;
- **Mold blanks:** Fudaba hard mold, SLD ultra-low temp. treatment die;

✓ **Dongguan** Equipment: 134+, 245人;

Capacity: plastic molds: 28+, Stamping molds: 15+

✓ **Kunshan** Equipment: 30+, 36人,

Capacity: Plastic molds: 5+

✓ **Hengyang** Equipment: 95+, 36人

Capacity: Tooling parts 4000+, Mold :5+;

Mold processing Training base;



7台CNC+18台EDM, 2条自动化线



PG光学磨床



JG坐标磨床



自动化三坐标测量仪

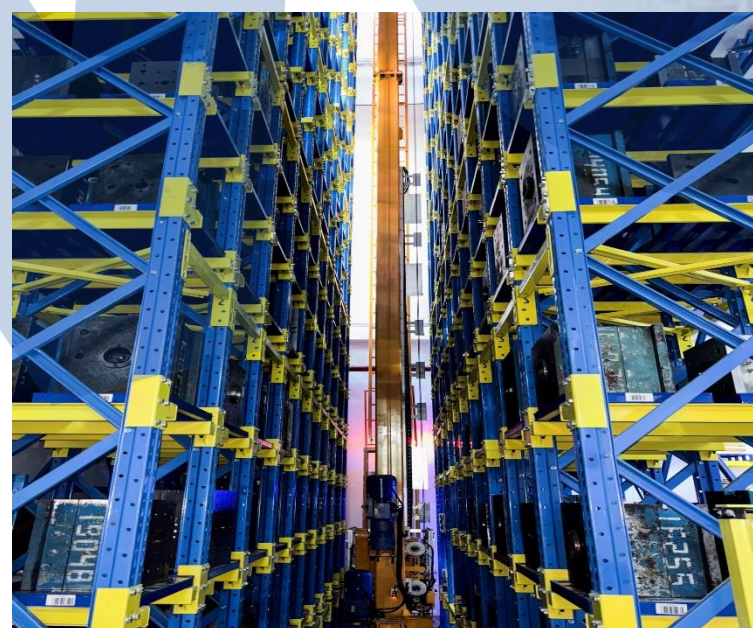
Dongguan : 53+

- Horizontal: 7, 15, 30, 50, 80, 100, 110, 180 tons;
- Vertical: 35, 40, 55, 75, 100 tons;
- brands: FANUC、NISSEI、ENGEL
- Mold: 1500 sets; Mold Frame: 100*100 ~ 500*600
- cavity: 2~64 cavities; precision: +/-0.01mm
- feedstock: centralized feeding, automatic baking and feeding

Kunshan : 23+

FANUC、NISSEI ; 15、50、80、110 tons;

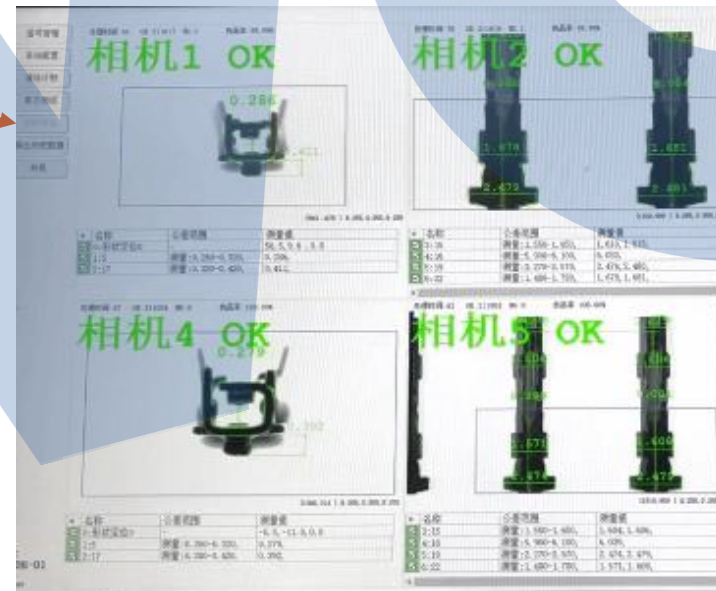
Plastic Molds : 1600+ ;



◆Stamping equipments (38) Stamping Molds: 800+ sets

- **Micro-Stamping:** 3, 5 tons;
- **High-speed Stamping:** 20, 30, 35, 40, 45, 60, 80 tons;
- **Brand:** BRUDERER, KYORI/NIDEC-SHIMPO, Yamada;
- **Accuracy:** 1um;
- **Speed SPM:** Micro punch 500 Max, Gantry punch 1500 Max;
- **Belt:** 1/1, 1/2, 2/4, internal riveting, bi-directional feeding;
- **Production capacity:** 40,000KPCS/month

Automaiton: 100% CCD online inspection, automatic packaging



Assembly Machines: 800+

- Fully & semi-automatic assembly machine
- Quality: Professional CCD size and electrical performance detection, automatic classification
- Pass rate: 99.5%
- Flexibilization: more than 30 manual assembly lines
- Capacity: 40-45M conn./month; Wiring harness 0.5M/month
- Features: Variegation, Small batch, High quality, Consistency, Stability
- Professional management: Separate production areas and specialized process management in accordance with product range and characteristic requirements

Kunshan : 200+ sets

Hefei : 60+ sets

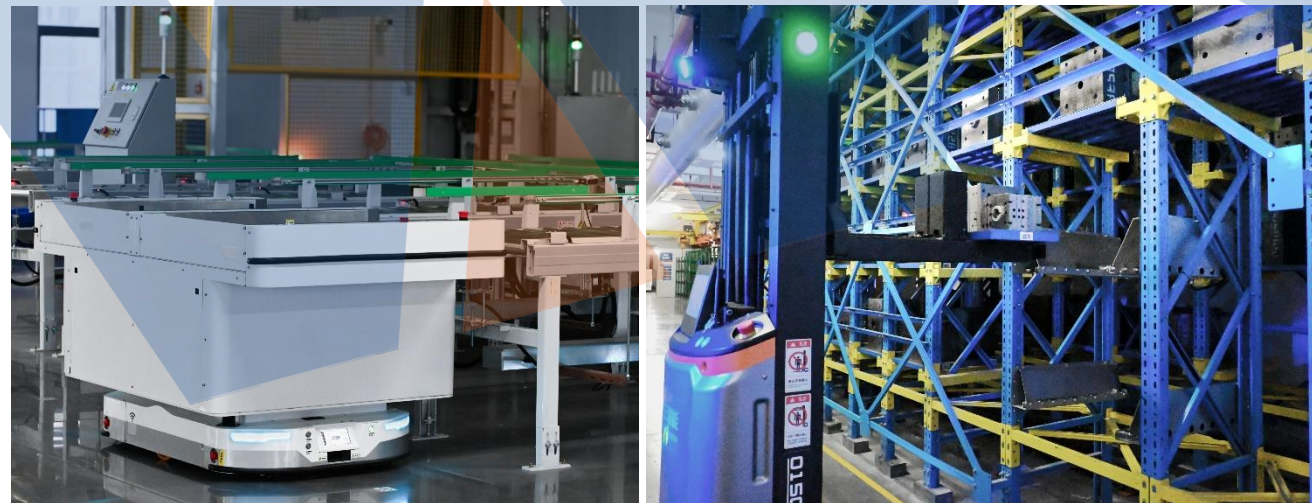


- Robots and intelligent systems, SAP, MES systems work together, intelligent picking, optimize storage space, improve picking accuracy, reduce manpower dependence;
- Intelligent management of efficient, precise, FIFO and traceability systems;
- Warehouse to workshop automatic logistics conveyor system;



△ Digital display system

▽ AGV Handling robot





Environmental protection : low carbon first, technology-driven

- **Clean Energy Substitution**
Rooftop photovoltaic system: annual power generation of **860,000 kWh**, carbon emission reduction of **857 ton**, 10% of clean energy.
- **Energy efficient system**
Water storage cooling central air-conditioning: **40%** energy saving by shaving peaks and filling in valleys, cost saving of **2.8 million RMB/Y.**
- **Efficient Utilisation of Resources**
Oil cooler + water-cooled circulation system linkage, water reuse rate of **90%**, to achieve 'zero waste heat emissions'



Digital management: whole chain synergy, empowered operation

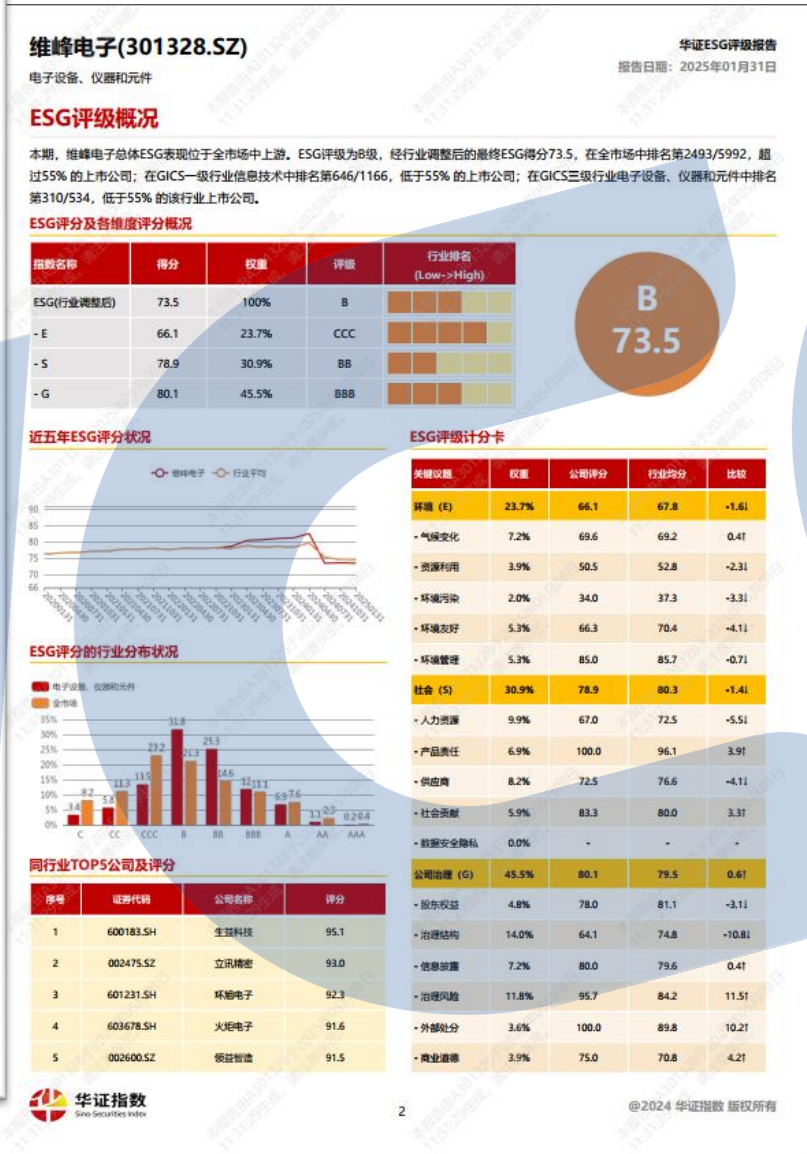
- **Resource Integration Hub (SAP-ERP)**
Integration of procurement, production and inventory data, costing efficiency increased by **60%**.
- **Intelligent manufacturing core (MES)**
Real-time monitoring of production dynamics, abnormality response speed shortened to 10 minutes, yield rate **99.5%+.**
- **Warehouse Intelligence (WMS)**
AGV linkage intelligent warehouse, material picking and matching efficiency increased by **70%**, inventory turnover rate optimization **35%**.



ESG system:

Responsibility empowerment, long-term development

- **Environmental Management normalisation**
Annual carbon reduction targets are detailed to departments, and carbon footprint tracking covers the whole process.
- **Normalization of social responsibility**
Improve employee rights mechanism in all aspects, and actively fulfil corporate citizenship responsibilities.
- **Transparent Corporate Governance**
Strictly implement the information disclosure system, equally protect the rights and interests of all shareholders





2025

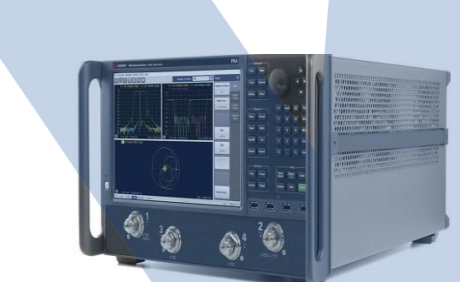
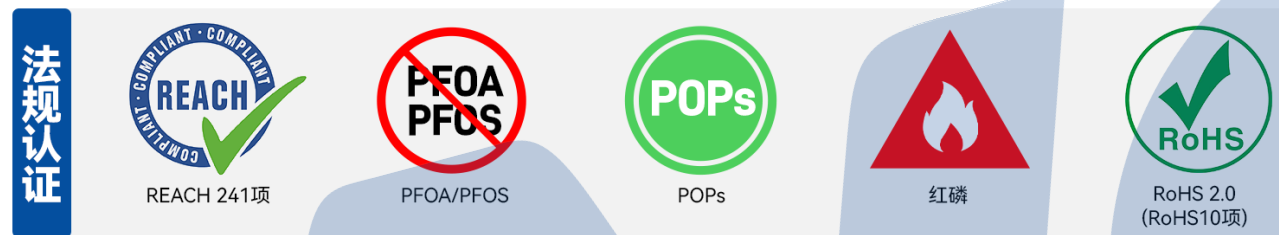
PART FOUR

Quality Assurance

PART
04

◆ 2 Testing Bases:

- Dongguan HQ laboratory: **800m², 104 sets of equipments**
- Kunshan laboratory: **400m², 24 sets of equipments**



Microwave Network Analyzer



Infrared spectrometer



VHX-7000 Ultra HD microscope



GC-MS test equipment



Automated cleanliness analyzer



Temperature, humidity and vibration tester

- **UL Witness Laboratory**
- **CNAS Laboratory (under application)**

I. Materials

01 Materials Analysis Laboratory

- 数码高清显微镜
- 维氏硬度测试仪
- 便携式表面粗糙度测量机

02 Plastic Application Laboratory

- 灼热丝测试仪
- 垂直水平燃烧试验机
- 针焰试验机

03 CT Room

- 膜厚测试仪
- 能量色散型X荧光光谱仪

II. Dimension

04 Ultra-precision Measuring Room

- 二次元影像测量仪
- 桥式三坐标测量机
- 通用型复合式影像测量仪

SIX DIMENSIONS ANALYSE

Twelve Laboratories & Over 70+ types of tests

UL witness Laboratory

CNAS Laboratory

III. Electrical

05 Electrical Function Laboratory

- 多路温度仪
- 绝缘耐压测试仪
- 接触压降测试仪
- 示波器
- 可编程直流电源供应器
- 微电阻测试机
- 动态电阻测试仪
- 直流电源供应器
- 四线电阻检测仪
- 雷击浪涌发生器

IV. Mechanical

06 Mechanics Laboratory

- 旋转拉力测试仪
- 自动扭力测试仪
- 自动插拔力测试机
- 微机控制电子万能试验机

V. Environment

07 Environmental Reliability Laboratory

- 恒温恒湿试验机
- 冷热冲击试验机
- 温度变化（湿热）试验箱

08 Salt Spray Laboratory

- 盐雾腐蚀试验箱

09 Vibration Laboratory

- 电磁式振动台
- 三综合试验机
- 机械冲击测试机
- 瞬间断线检测仪
- 单臂跌落测试仪

10 Aging Laboratory

- 高温试验箱
- 蒸汽老化测试机
- 线材弯折试验机

11 Cleanliness Laboratory

- 清洁度测试仪

VI. Network Analyse

12 High Frequency & High Speed Analysis Laboratory

- 矢量网络分析仪



2025

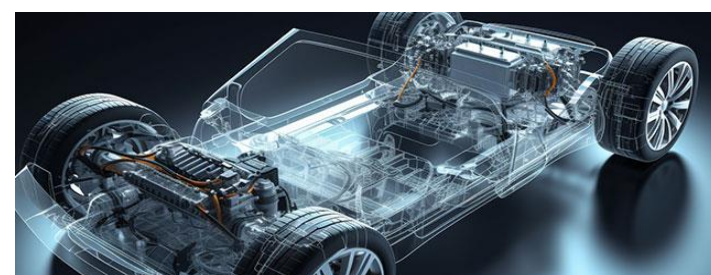
PART FIVE

Business Capability

PART
05

Strategic Partners & Revenue

High end precision connectors and customer solution Service Provider



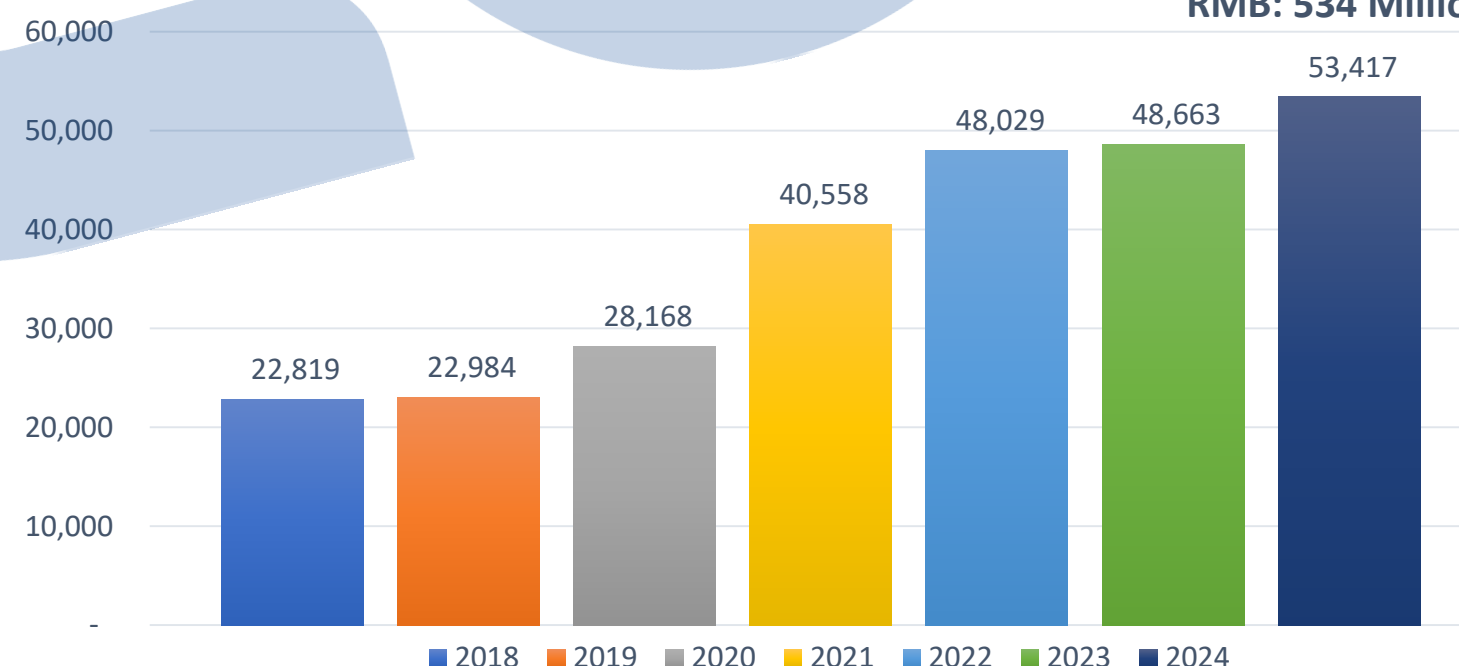
24.45%
Green Energy
RMB 130,592,200

48.23%
Industrial Control
RMB 257,644,300

26.09%
Automotive
RMB139,355,500

Others: 1.23%

2024 REVENUE ALLOCATION



USD: 75 Million
RMB: 534 Million

Solutions : Industrial Control

High end precision connectors and customer solution Service Provider



Industrial control and automation

- PLC, IPC
- Industrial Intelligent Devices



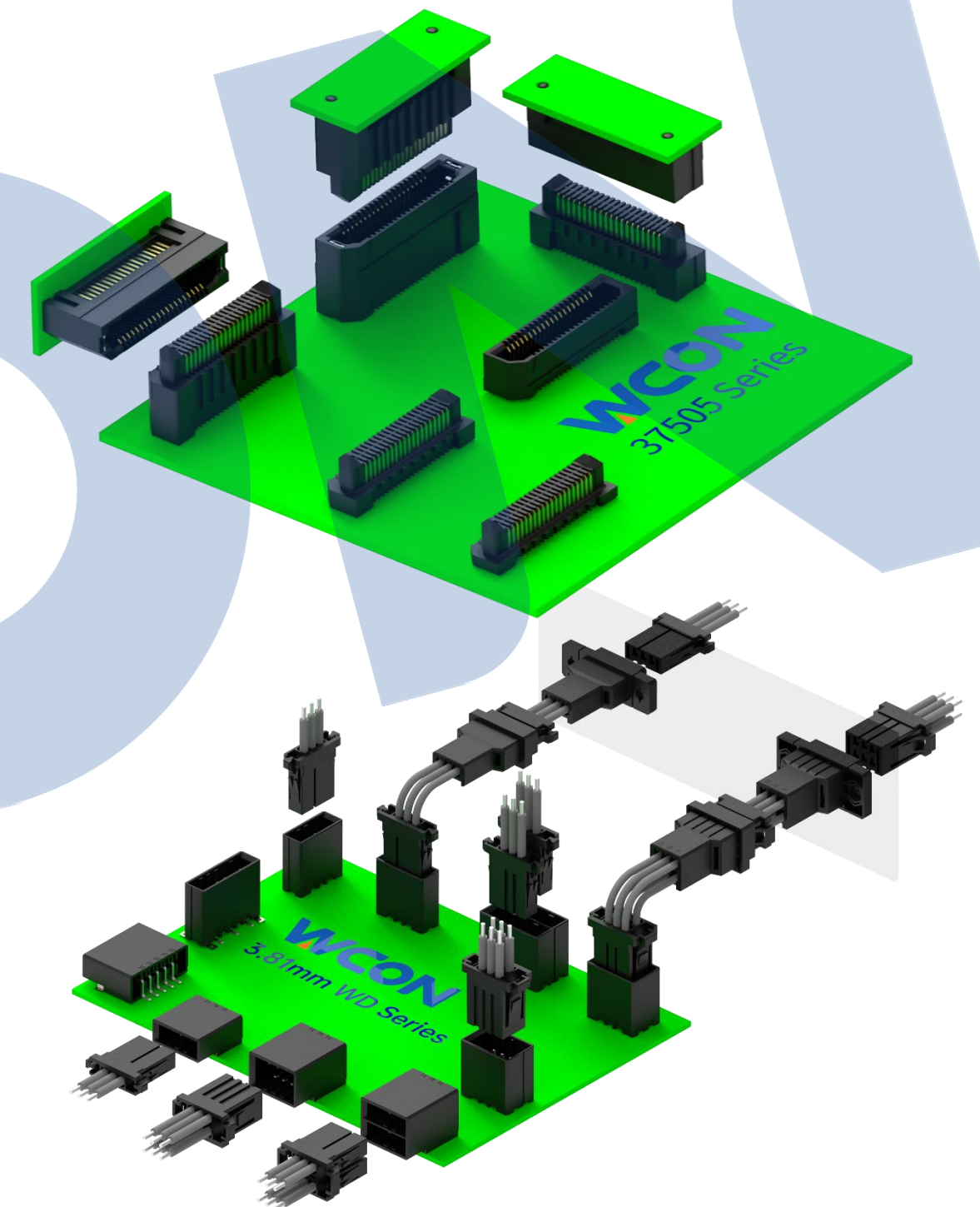
Industrial Robotics

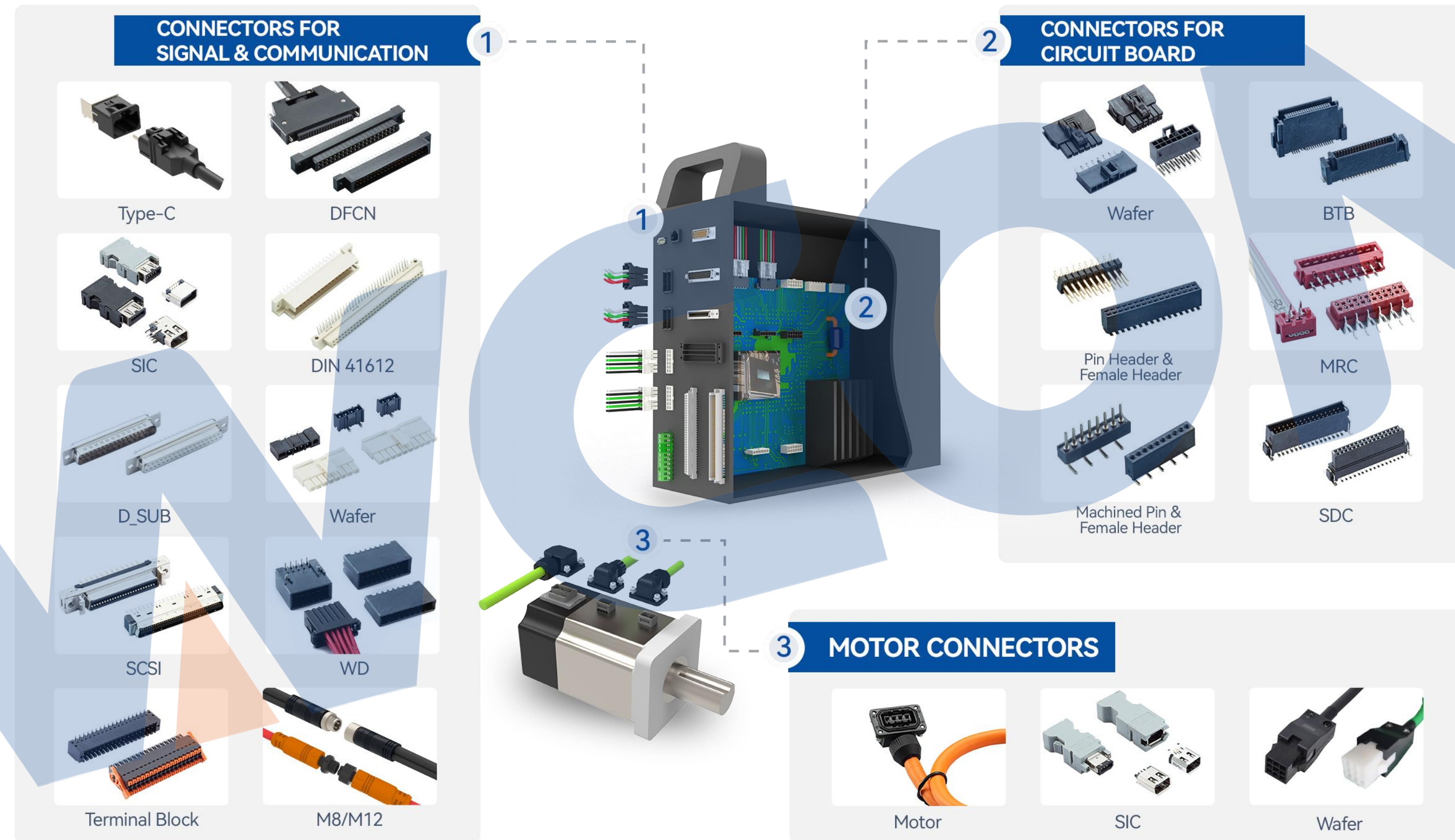
- Industrial robot arms
- Motion Control Box

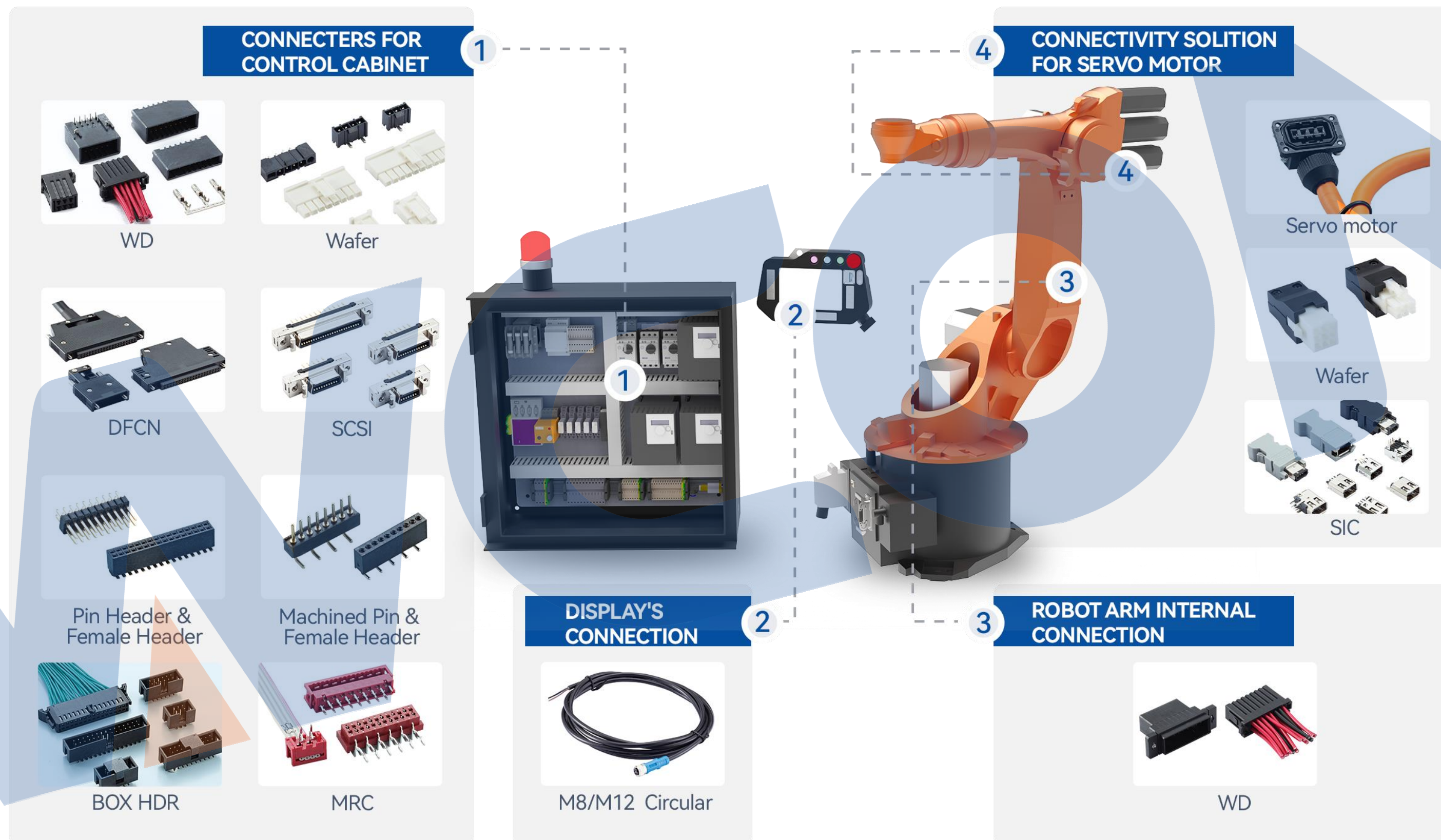


Smart City

- Intelligent Buildings and Elevators
- Commercial Servers

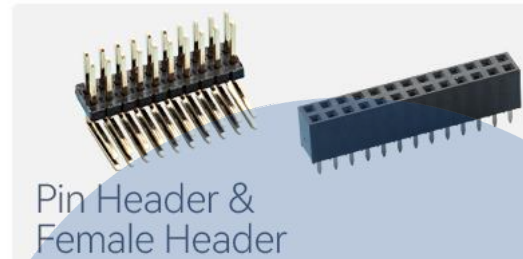




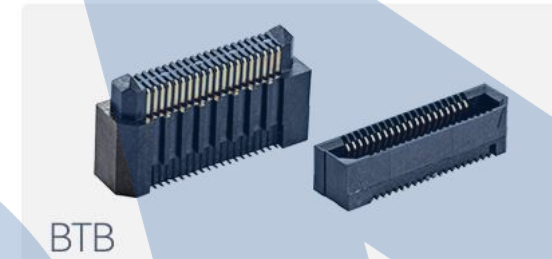




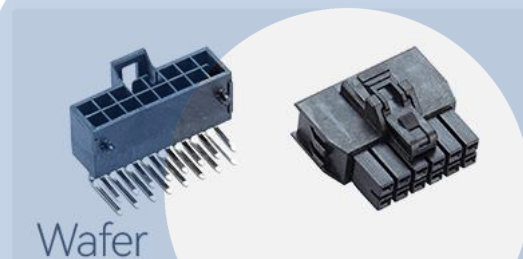
SENSOR APPLICATIONS



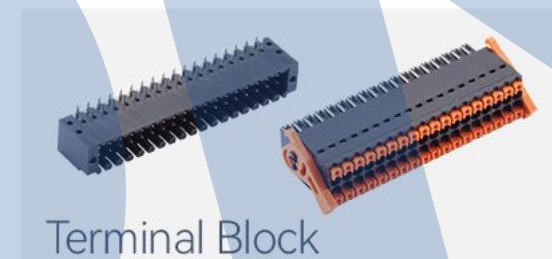
Pin Header &
Female Header



BTB



Wafer



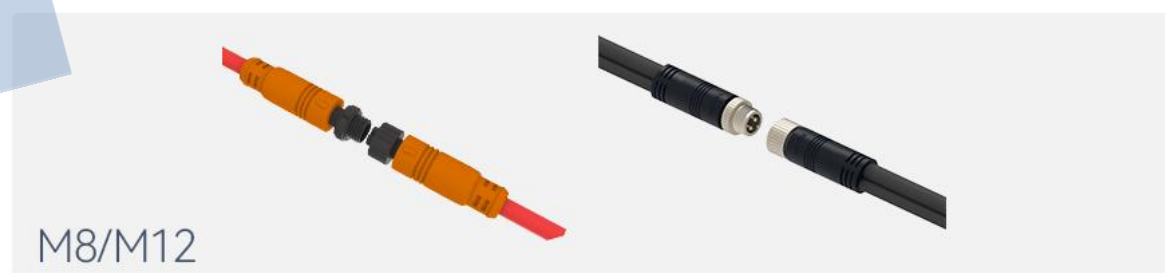
Terminal Block



D-SUB



SIC



M8/M12



5371 / 5372 / 5373



GYROSCOPE



TOUCH SENSOR



TEMPERATURE SENSOR



SOUND SENSOR



HUMIDITY SENSOR



WATER SENSOR



GAS SENSOR



HEARTBEAT SENSOR



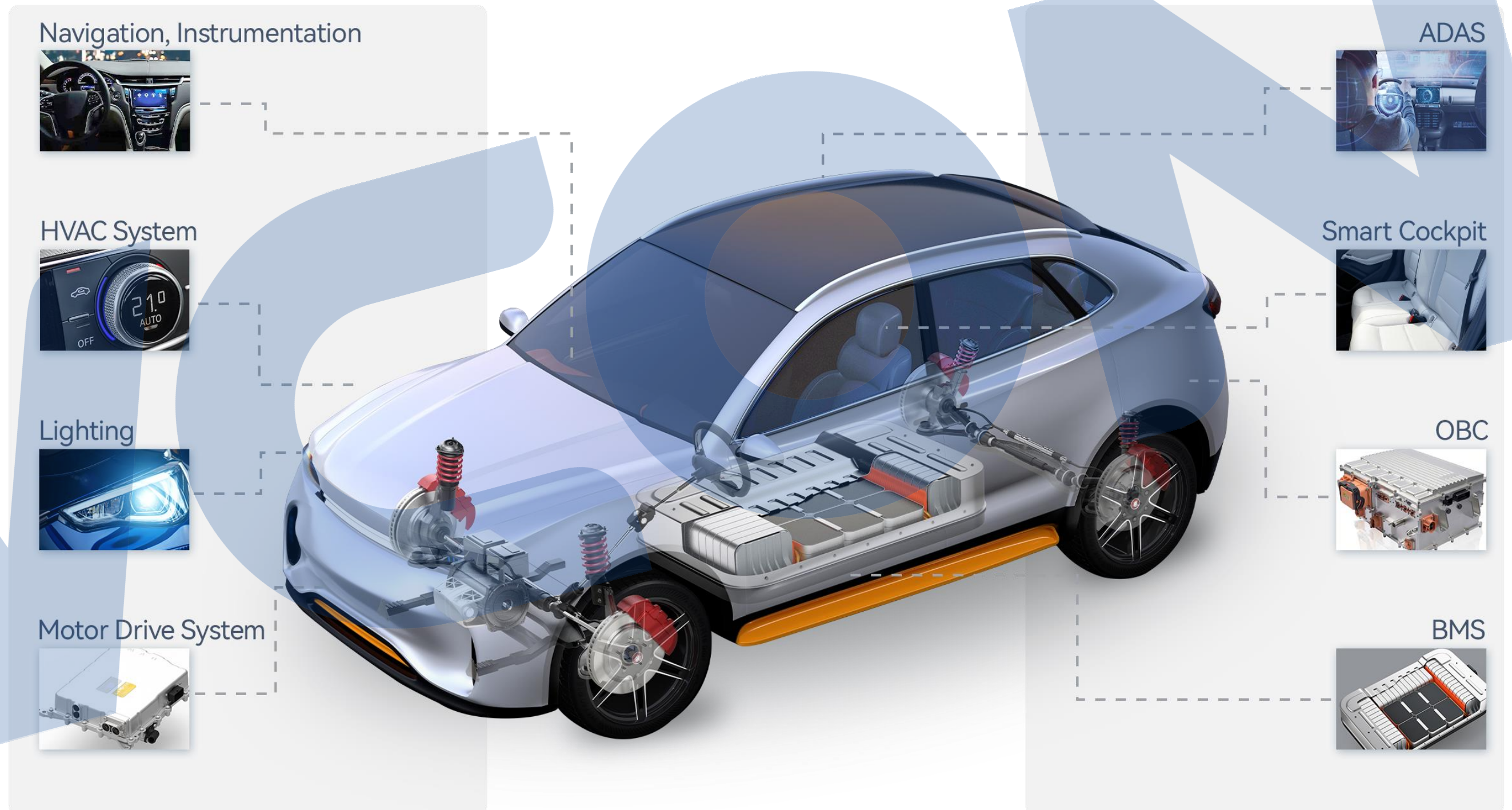
LIGHT SENSOR



RAIN SENSOR

Automotive Electronics :

- Green Energy Vehicle
- Passenger Vehicle
- Engineering Vehicles
- Construction Machine





Motor Drive System



On-Board Charger



74040



73742



73040



73036



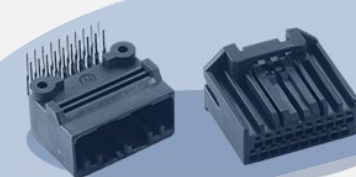
K550



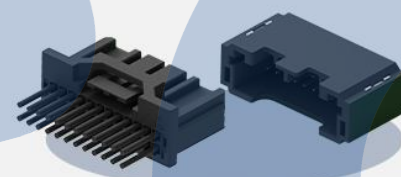
3910、3911、F3911



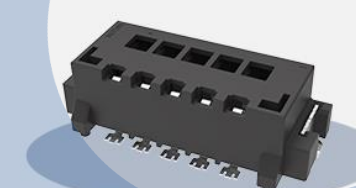
Battery Management System



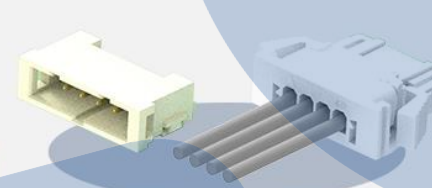
72230、72230A



72025、72025A



21F62(Floating)



3918



3915



ADAS



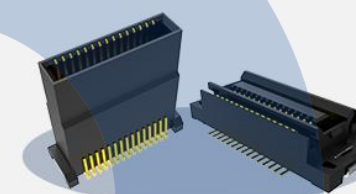
Millimeter-Wave Radar



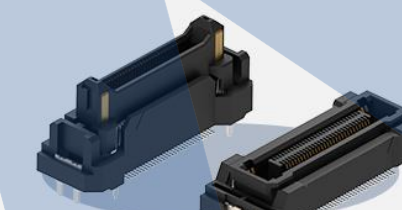
Laser Radar



Integrated Control Cabinet for Traveling & Parking



3618(Floating)



36F23(Floating)



Mini Fakra



TYPE-C



Radar Shell

Solutions : Automotive

High end precision connectors and customer solution Service Provider



Smart Cockpit



Lighting



Navigation
Instrumentation



HAVC system



Lighting Modules



Door & Window
Control Modules



3915



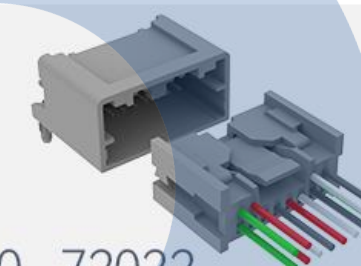
3918



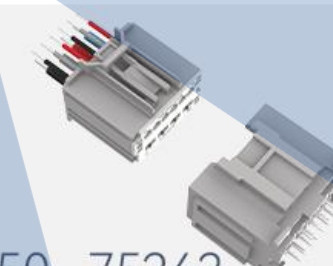
720001



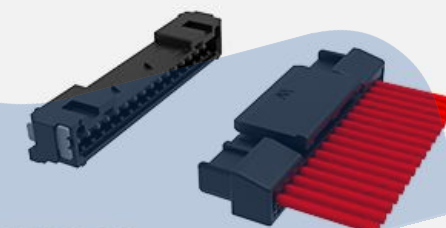
72230、72230A



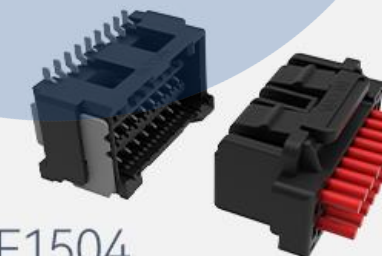
72000、72022



75250、75263



WF1258



WF1504



WF2010



WF2012



WF2508



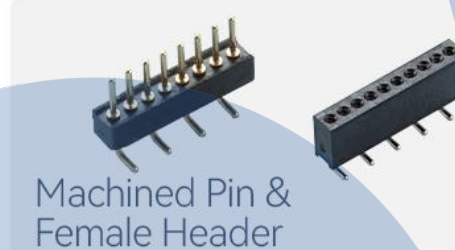
WF2509



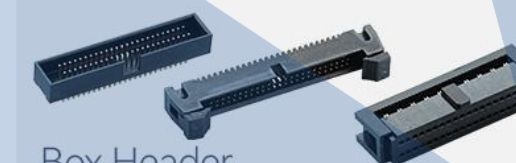
PHOTOVOLTAIC & ENERGY STORAGE APPLICATION



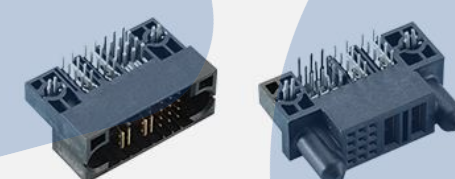
Pin Header &
Female Header



Machined Pin &
Female Header



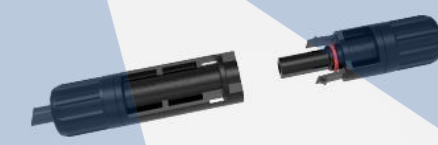
Box Header,
Ejector Header, IDC



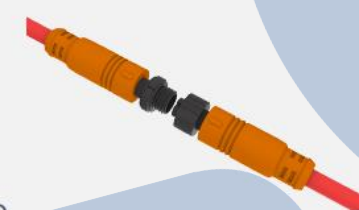
PSP



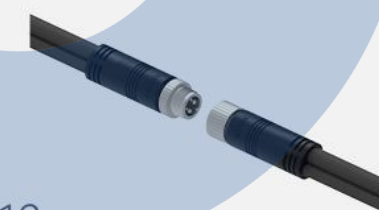
WD



Photovoltaic



M8



M12



Energy Storage



Harness

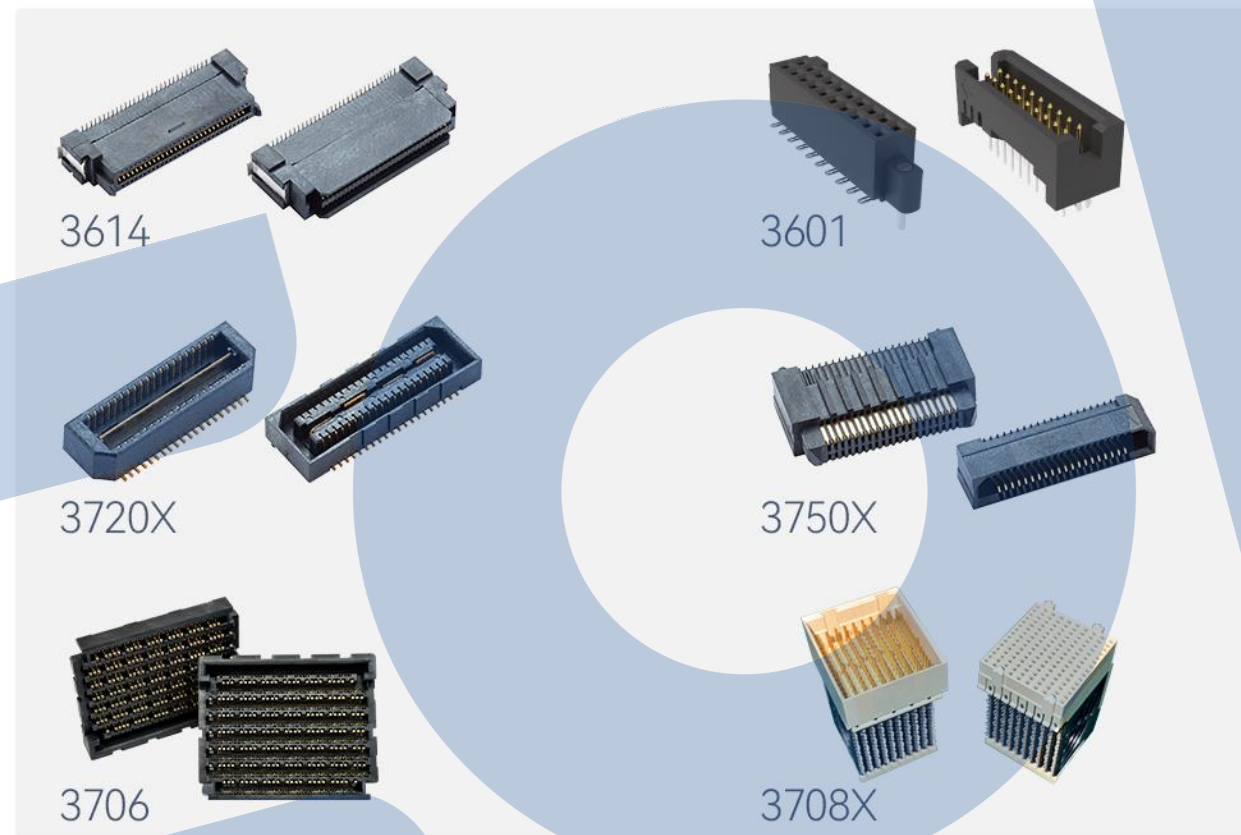


Data Center & Network Equipment

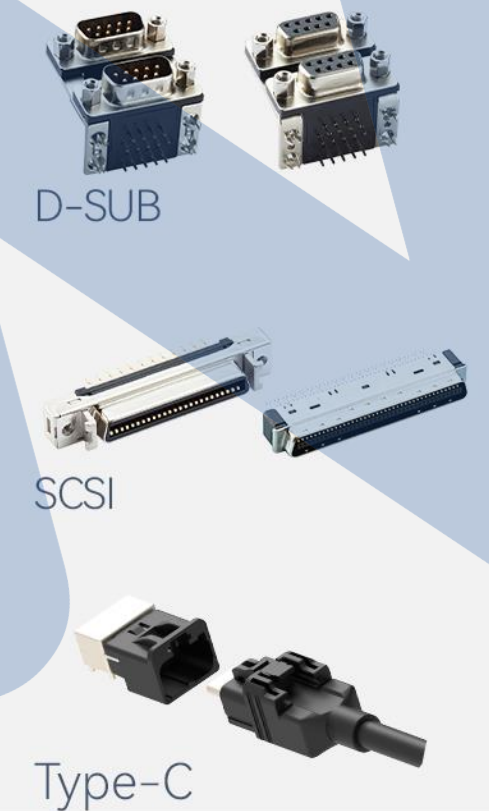
- Server
- Switch
- Router
- HPC
- Storage Device
- Wireless Base Station & Radio



INTERNAL INTERCONNECTION



I/O



POWER SUPPLY





MEDICAL APPLICATIONS & DEVICES



Non-magnetic
Pin & Female Header



Machined Pin &
Female Header



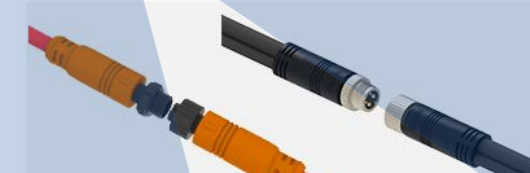
Wafer



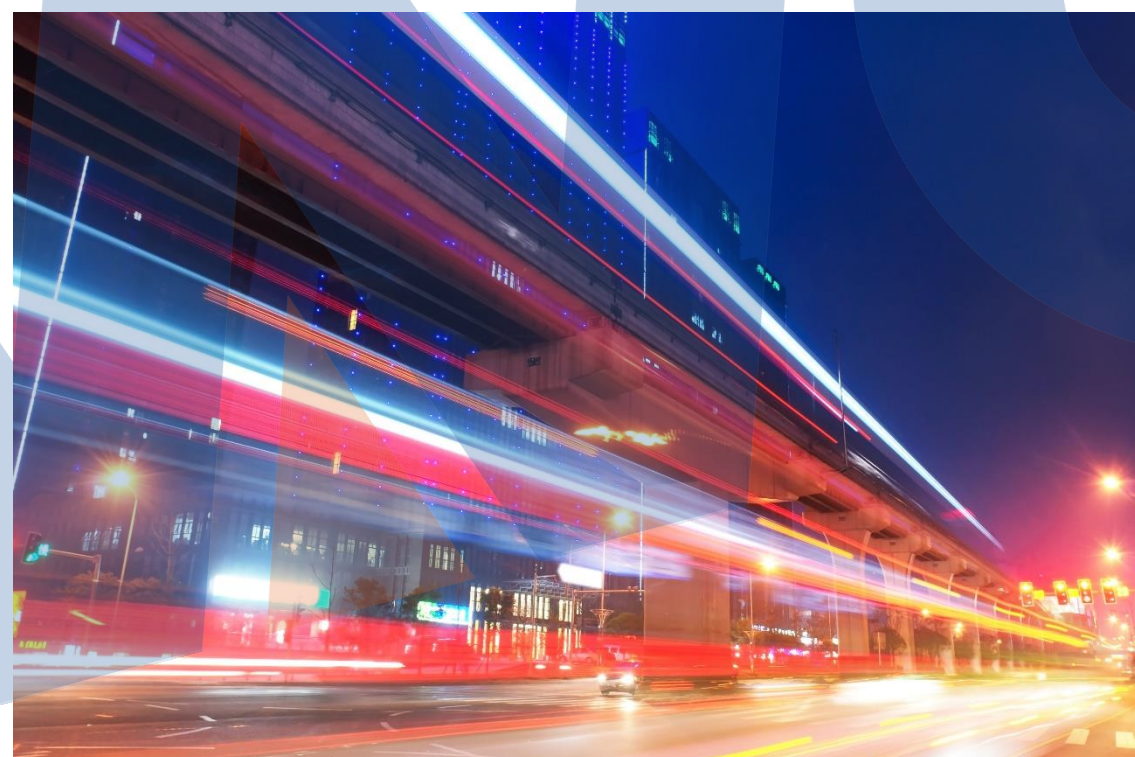
High-speed
Board-to-Board



SIC



M8/M12



RAIL TRANSIT APPLICATIONS: COMMUNICATIONS & SIGNALS



SCSI



D_SUB



Din 41612



Terminal Block



Wafer



WD



2025

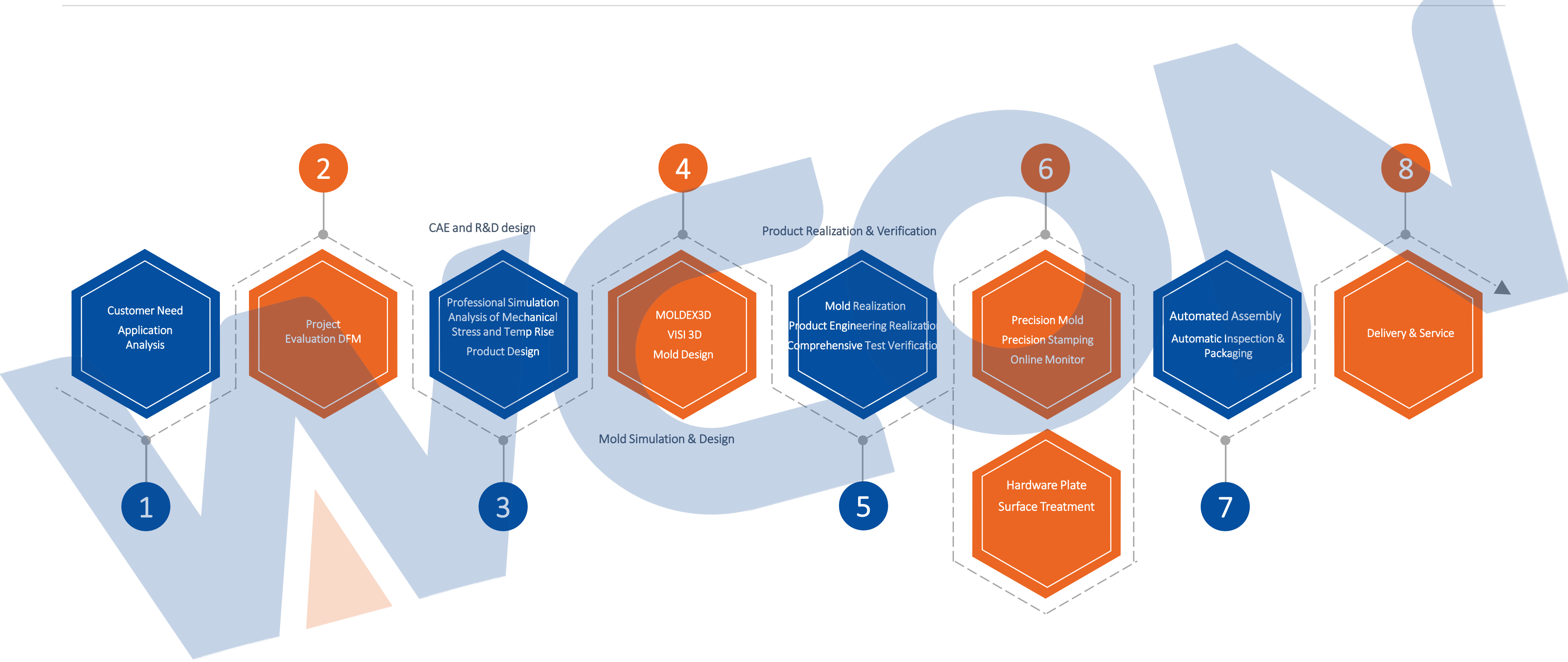
PART SIX

After-sales Service

PART
06

Rigorous Delivery Procedure

High end precision connectors and customer solution Service Provider



ADVANTAGES

SHORT LEAD TIME

China Made and
Fast Logistics



QUALITY ASSURANCE

Recognized by Various End-Users and Tier-1s.



STRONG TECHNOLOGY

Full Categories, International Brand Substitution,
Own Property Rights, Optimization and Upgrading



EXCELLENT SERVICE

Comprehensive Service + Quick Response



UNIFICATION OF STANDARDS

Integration of the Three Major International
Automotive Standards QC/T1067, USCAR, LV214



LOCALIZATION

Creating High Value for Customers and
Achieving Win-Win Situation



WCON ELECTRONICS (GUANGDONG) CO.,LTD

Add :No.15,Wenming Road,Danling Community, Humen Town, Dongguan,
Guangdong.523930, China

KUNSHAN WCON ELECTRONICS CO.,LTD

Add : No.321, Xinhong Road, Shipu, QiandengTown, Kunshan,Jiangsu, China

HEFEI WCON ELECTRONICS CO.,LTD

Add : 2F, Building E, Greentown Science Park,High-tech Development Zone,
Hefei, Anhui, China

WCON ELECTRONICS (Thailand) CO.,LTD

Add: VG3C+H57, Hua Wa, Si Maha Phot District, Prachin BBuri25140,
Thailand

Sales Contacts

Int'l Sales Dept.
salesdg01@wcon.com
salesdg05@wcon.com

Key Account Sales:
salesdg28@wcon.com
salesks@wcon.com

Local Sales :
salesdg10@wcon.com
salesks01@wcon.com

Online Sales:
salesdg26@wcon.com



Website



E-Catalog



Official Video



TikTok

THANKS

