

HSF

NOTES:

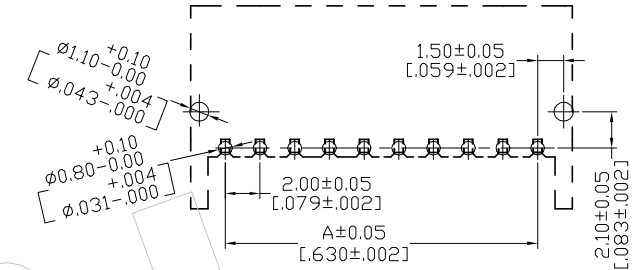
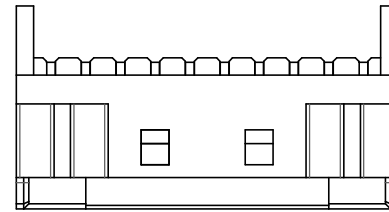
Current Rating: 3.0A(22#AWG)
 Contact Resistance: 20mΩ Max
 Withstand Voltage: 800V AC/DC
 Insulation Resistance :1000MΩ Min
 Operation Temperature: -40℃ to +105℃

Housing Material: PA9T GF UL94V-0 Natural
 Contact Material: Copper Alloy
 Contact plating: Bright Tin Over Nickel

Recommended Process:

Wave/IR soldering, Peak temperature: 260±5℃, 5S

Recommended P.C.B Layout(Top Side)
 (PCB BOARD TOLERANCE±0.05)



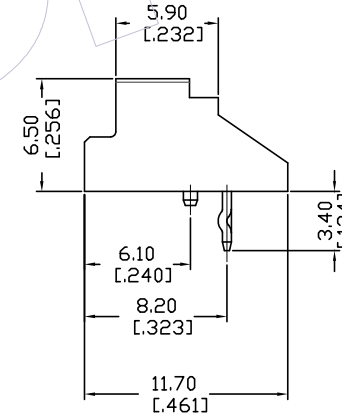
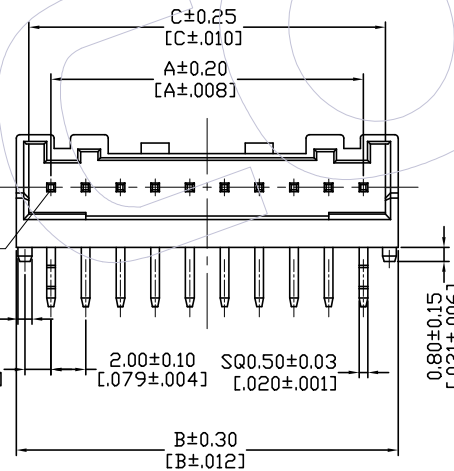
Ordering Information

WF2018 - WRH XX T X 1

No. of Pins
02~16P

Packing:
T=TUBE

$\phi 0.80 \pm 0.10$
[0.031±0.004]
1.50
[0.059]



PIN.	DIM A	DIM B	DIM C	DIM D
2pin	2.00	6.00	4.55	5.00
3pin	4.00	8.00	6.55	7.00
4pin	6.00	10.00	8.55	9.00
5pin	8.00	12.00	10.55	11.00
6pin	10.00	14.00	12.55	13.00
7pin	12.00	16.00	14.55	15.00
8pin	14.00	18.00	16.55	17.00
9pin	16.00	20.00	18.55	19.00
10pin	18.00	22.00	20.55	21.00
11pin	20.00	24.00	22.55	23.00
12pin	22.00	26.00	24.55	25.00
13pin	24.00	28.00	26.55	27.00
14pin	26.00	30.00	28.55	29.00
15pin	28.00	32.00	30.55	31.00
16pin	30.00	34.00	32.55	33.00

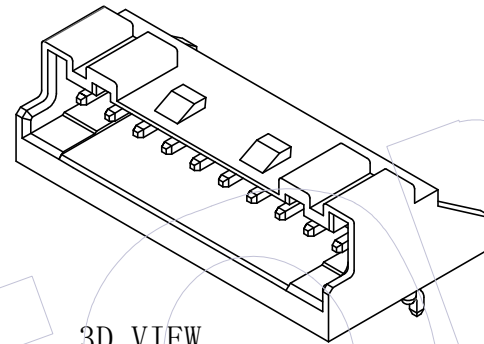
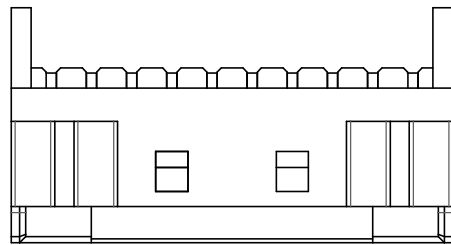
REV	DATE	MODIFICATION DESCRIPTION	CHANGE	OPERATION	DRAW	DATE	SCALE	FIT	PART NO.
				x.x	SYB	2022.02.28	UNIT	mm [inch]	WF2018-WRHXXTX1
				x.xx	CHECK	DATE	SIZE	A4	TITLE:
				x.xxx	APPROVE	DATE	SHEET	1/3	2.0 Wafer 90° Single Row DIP Type
				Angle			PROJ.		Customer NO.
				DIM	TOL				

WCON
 Http: www.wcon.com

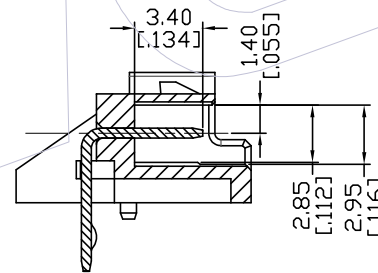
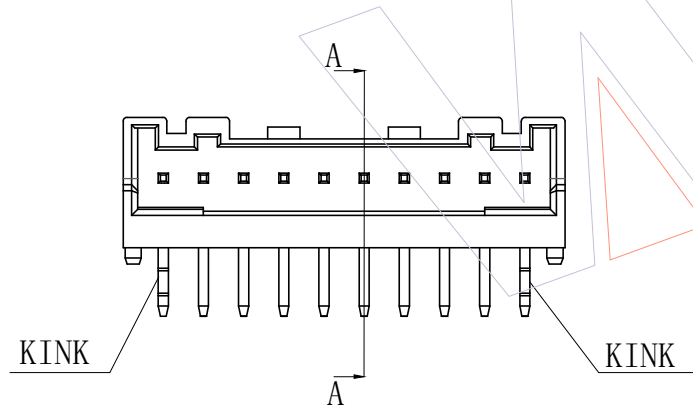
WCON-Dongguan
 Tel: +86 769 85358920
 Fax: +86 769 85358915
 E-mail: sales@wcon.com

WCON-Kunshan
 Tel: +86 512 57468408
 Fax: +86 512 57468468
 E-mail: salesks@wcon.com

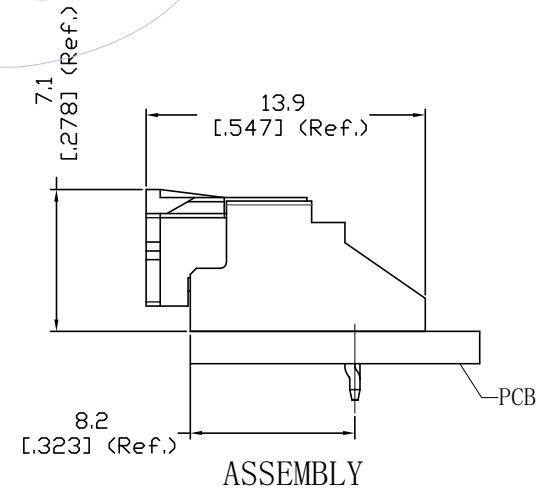
HSF



3D VIEW
Scale 1:1



Section A-A
Scale 1:1



ASSEMBLY

REV	DATE	MODIFICATION DESCRIPTION	CHANGE	OPERATION	DRAW	DATE	SCALE	FIT	PART NO.
AO	2022.02.28	NEW	-----	x.x ±0.40	SYB	2022.02.28	UNIT	mm [inch]	WF2018-WRHXXTX1
				x.xx ±0.25	CHECK	DATE	SIZE	A4	TITLE:
				x.xxx ±0.15	APPROVE	DATE	SHEET	2/3	2.0 Wafer 180° Single Row DIP Type
				Angle ± 3°			PROJ.	Customer NO.	
				DIM TOL					

WCON

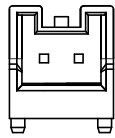
Http: www.wcon.com

WCON-Dongguan
Tel: +86 769 85358920
Fax: +86 769 85358915
E-mail: sales@wcon.com

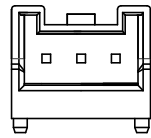
WCON-Kunshan
Tel: +86 512 57468408
Fax: +86 512 57468468
E-mail: salesks@wcon.com

HSF

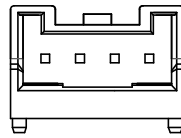
Standard Polarization For Receptacles



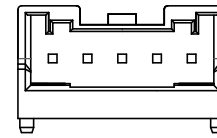
2 Pin



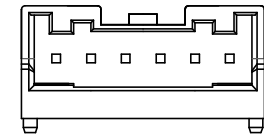
3 Pin



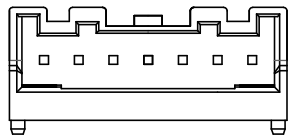
4 Pin



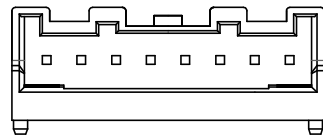
5 Pin



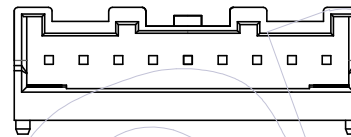
6 Pin



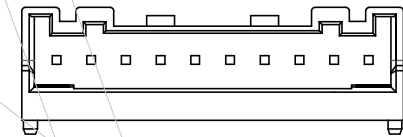
7 Pin



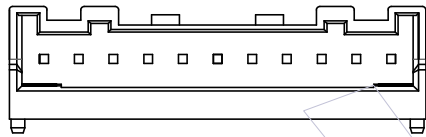
8 Pin



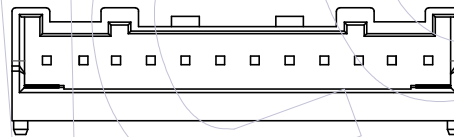
9 Pin



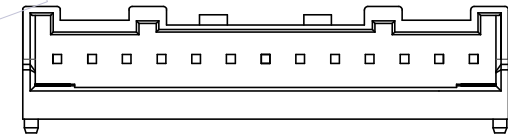
10 Pin



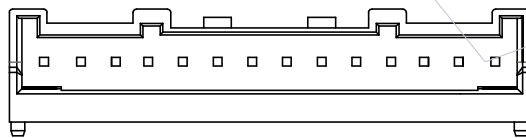
11 Pin



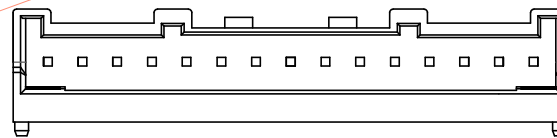
12 Pin



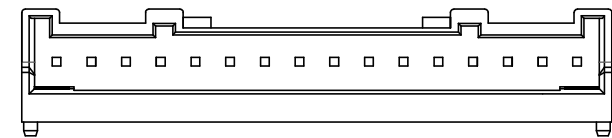
13 Pin




14 Pin



15 Pin



16 Pin

				OPERATION	DRAW	DATE	SCALE	FIT	PART NO.	 Http: www.wcon.com WCON-Dongguan Tel: +86 769 85358920 Fax: +86 769 85358915 E-mail: sales@wcon.com	WCON-Kunshan Tel: +86 512 57468408 Fax: +86 512 57468468 E-mail: salesks@wcon.com
				x.x ±0.40	SYB	2022.02.28	UNIT	[mm inch]	WF2018-WRHXXTX1		
				x.xx ±0.25	CHECK	DATE	SIZE	A4	TITLE:		
AO	2022.02.28	NEW	-----	x.xxx ±0.15	APPROVE	DATE	SHEET	3/3	2.0 Wafer 90° Single Row DIP Type		
REV	DATE	MODIFICATION DESCRIPTION	CHANGE	Angle ± 3°			PROJ.		Customer NO.		
				DIM TOL							