

HSF

NOTES:
 Rated Current:1.5AMP.(20°C,1*2P-1*15P)
 1.0AMP.(20°C,1*16P-1*50P) $\Delta 3$
 Contact Resistance:20m Ω Max.
 Withstand Voltage:500V AC/DC
 Insulation Resistance:1000M Ω Min.
 Operation Temperature:-40°C to +125°C(Gold Plating) $\Delta 3$
 -40°C to +105°C(Tin Plating) $\Delta 3$
 Contact Material:Copper Alloy
 Contact Plating:Au or Sn Over 30u" Min Ni $\Delta 3$
 Insulator Material:PA9T+G.F UL94V-0 BK $\Delta 3$

Ordering Information $\Delta 3$

1325-1 1 XX XX M XXX C X XX $\Delta 3$

Plastic Layer
 Plastic Row
 No.of Pins
 Per Row:02-50
 Contact Plating
 G0=Gold Flash
 G3=10u"Au, BG3=8u"PdNi+2u"Au
 G4=15u"Au, BG4=13u"PdNi+2u"Au
 G5=30u"Au, BG5=28u"PdNi+2u"Au
 S0=Gold Flash/Tin
 S3=10u"Au/Sn, P3=8u"PdNi+2u"Au/Sn
 S4=15u"Au/Sn, P4=13u"PdNi+2u"Au/Sn
 S5=30u"Au/Sn, P5=28u"PdNi+2u"Au/Sn
 SN=Bright Tin
 SM=Matte Tin

Series No.
 01-99
 Packing
 T=Tube
 P=Tube+CAP
 R=Tape&Reel+CAP

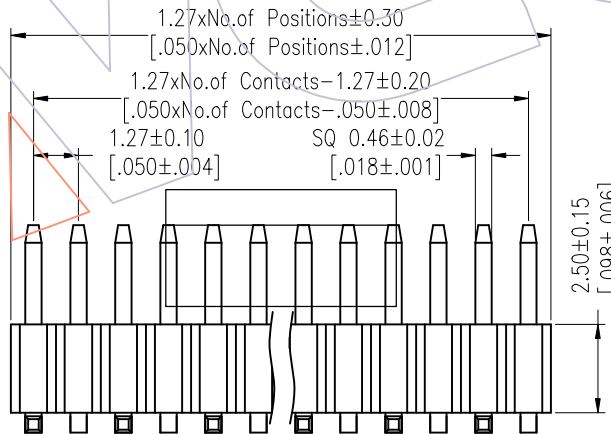
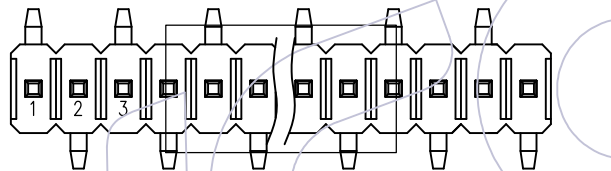
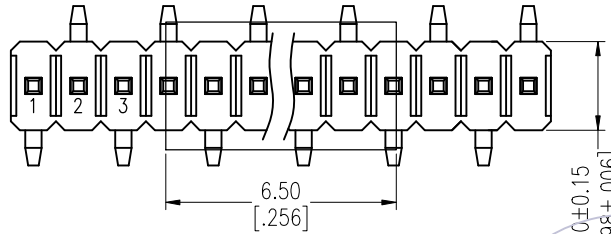
Insulator Material
 C=PA9T(Standard)

Pin Length
 L(See Table)

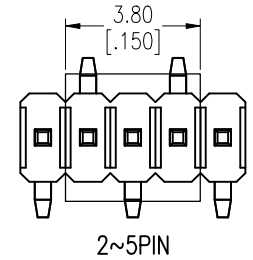
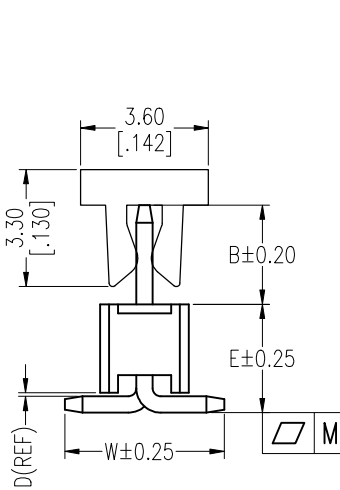
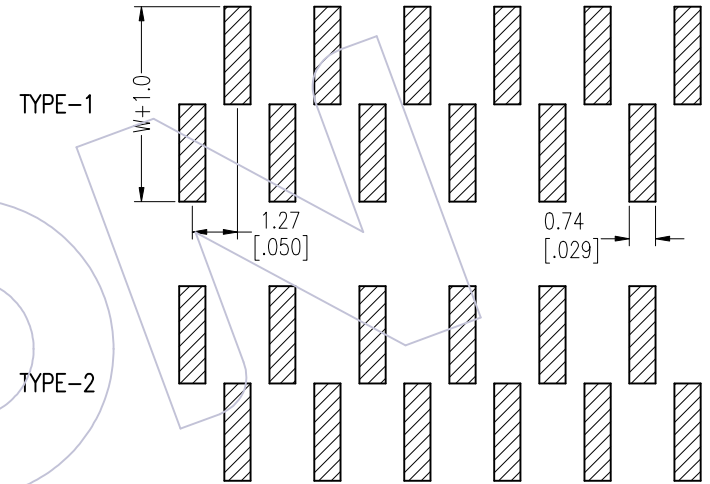
Type:
 M=SMT

Item	Pin Length	W	E	D	B	Mating
Standard	6.8	4.5	3.06	0.1	2.0	2321/2320T
	7.8				3.0	2334/2344/2346
	8.3				3.5	2357
	9.3				4.5	2345/2385
Alternate						

PIN(PerRow)	2-15P	16-30P	31-50P
M	0.10	0.12	0.15



Recommended P.C.B Layout (Top Side)
 (PCB BOARD TOLERANCE±0.05)
 (PCB Thickness:T=1.60m)



REV	DATE	MODIFICATION DESCRIPTION	CHANGE	DIM	TOL	APPROVE	DATE	PROJ.	PART NO.	TITLE:
A3	2025/09/03	Standardization Drawing	CP	OPERATION	DRAW	DATE	2025/09/03	SCALE	1325-11XXXXMXXXCXXX $\Delta 3$	Fit
A2	2023/02/02	Add Flatness	Du Ying	x.X ±0.40	CP	DATE	2025/09/03	UNIT	1.27 Pin Header, SINGLE ROW, SMT, H=2.5	A4
A1	2018/01/18	MODIFY PART NO.	William Chen	x.XX ±0.25	CHECK	DATE	2025/09/03	SIZE		
AO	2012/03/31	NEW	William Chen	x.XXX ±0.15	TANG	DATE	2025/09/03	SHEET		
REV	DATE	MODIFICATION DESCRIPTION	CHANGE	DIM	TOL	APPROVE	DATE	PROJ.	Customer NO.	

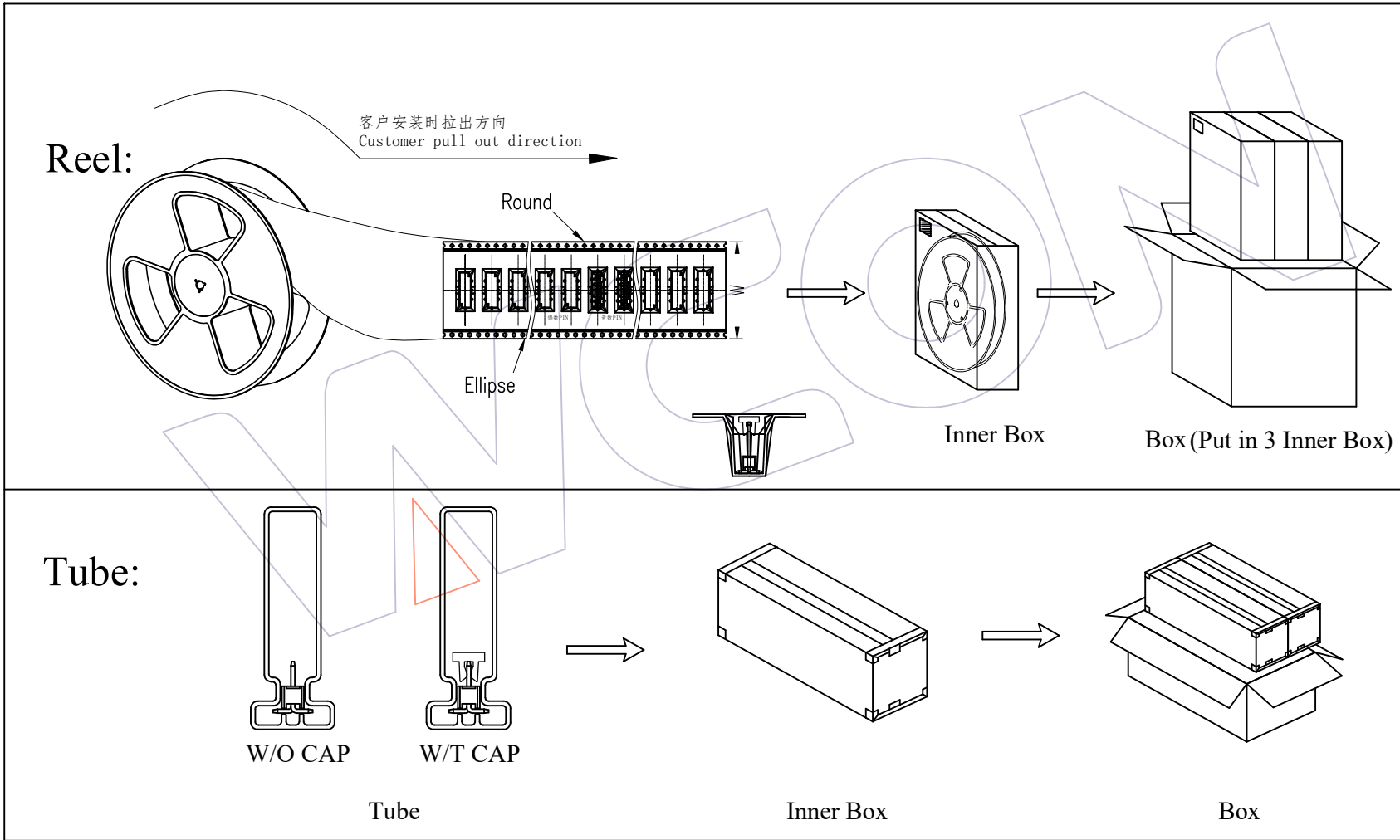
WCON
 Http: www.wcon.com

WCON-Dongguan
 Tel: +86 769 85358920
 Fax: +86 769 85358915
 E-mail: sales@wcon.com

WCON-Kunshan
 Tel: +86 512 57468408
 Fax: +86 512 57468468
 E-mail: sales@wcon.com

HSF

Packing:



A3	2025/09/03	Standardization Drawing	CP	OPERATION	DRAW	DATE	SCALE	Fit	PART NO. 1325-11XXXXMXXXCXXX
A2	2023/02/02	Add Flatness	Du Ying	X.X ±0.40	CP	2025/09/03	UNIT	mm [inch]	
A1	2018/01/18	MODIFY PART NO.	William Chen	X.XX ±0.25	CHECK	DATE	SIZE	A4	TITLE: 1.27 Pin Header, SINGLE ROW, SMT, H=2.5
A0	2012/03/31	NEW	William Chen	X.XXX ±0.15	TANG	2025/09/03	SHEET	2/5	
REV	DATE	MODIFICATION DESCRIPTION	CHANGE	Angle ± 3'	APPROVE	DATE	PROJ.		Customer NO.
				DIM TOL	Steven Zhao	2025/09/03			

WCON
Http: www.wcon.com

WCON-Dongguan
Tel: +86 769 85358920
Fax: +86 769 85358915
E-mail: sales@wcon.com

WCON-Kunshan
Tel: +86 512 57468408
Fax: +86 512 57468468
E-mail: salesks@wcon.com

HSF

Packaging Quantity Refers To The Following Table

PINS	Q' ty/Tube	Q' ty/Inner Box	Q' ty/Box
4	107	8,560	17,120
5	87	6,960	13,920
6	73	5,840	11,680
7	63	5,040	10,080
8	55	4,400	8,800
9	49	3,920	7,840
10	45	3,600	7,200
11	40	3,200	6,400
12	37	2,960	5,920
13	34	2,720	5,440
14	32	2,560	5,120
15	29	2,320	4,640
16	28	2,240	4,480
17	26	2,080	4,160
18	25	2,000	4,000
19	23	1,840	3,680
20	22	1,760	3,520
21	21	1,680	3,360
22	20	1,600	3,200
23	19	1,520	3,040
24	18	1,440	2,880
25	18	1,440	2,880
26	17	1,360	2,720
27	16	1,280	2,560

PINS	Q' ty/Tube	Q' ty/Inner Box	Q' ty/Box
28	16	1,280	2,560
29	15	1,200	2,400
30	15	1,200	2,400
31	14	1,120	2,240
32	14	1,120	2,240
33	13	1,040	2,080
34	13	1,040	2,080
35	12	960	1,920
36	12	960	1,920
37	12	960	1,920
38	11	880	1,760
39	11	880	1,760
40	11	880	1,760
41	11	880	1,760
42	10	800	1,600
43	10	800	1,600
44	10	800	1,600
45	10	800	1,600
46	9	720	1,440
47	9	720	1,440
48	9	720	1,440
49	9	720	1,440
50	9	720	1,440

B=2.0

PINS	W	Q' ty/Reel	Q' ty/Inner Box	Q' ty/Box
2	12	800	4,800	14,400
3	16	800	3,200	9,600
4	16	800	3,200	9,600
5	24	800	2,400	7,200
6	24	800	2,400	7,200
7	24	800	2,400	7,200
8	24	800	2,400	7,200
9	24	800	2,400	7,200
10	24	800	2,400	7,200
11	24	800	2,400	7,200
12	32	800	1,600	4,800
13	32	800	1,600	4,800
14	32	800	1,600	4,800
15	44	800	1,600	4,800
16	44	800	1,600	4,800
17	44	800	1,600	4,800
18	44	800	1,600	4,800
19	44	800	1,600	4,800
20	44	800	1,600	4,800
21	44	800	1,600	4,800
22	44	800	1,600	4,800
23	44	800	1,600	4,800
24	44	800	1,600	4,800
25	56	800	800	2,400
26	56	800	800	2,400

B=2.0

PINS	W	Q' ty/Reel	Q' ty/Inner Box	Q' ty/Box
27	56	800	800	2,400
28	56	800	800	2,400
29	56	800	800	2,400
30	56	800	800	2,400
31	56	800	800	2,400
32	56	800	800	2,400
33	56	800	800	2,400
34	72	800	800	2,400
35	72	800	800	2,400
36	72	800	800	2,400
37	72	800	800	2,400
38	72	800	800	2,400
39	72	800	800	2,400
40	72	800	800	2,400
41	72	800	800	2,400
42	72	800	800	2,400
43	72	800	800	2,400
44	72	800	800	2,400
45	72	800	800	2,400
46	72	800	800	2,400
47	88	800	800	2,400
48	88	800	800	2,400
49	88	800	800	2,400
50	88	800	800	2,400

A3	2025/09/03	Standardization Drawing	CP	OPERATION	DRAW	DATE	SCALE	Fit	PART NO.
A2	2023/02/02	Add Flatness	Du Ying	x.X ±0.40	CP	2025/09/03	UNIT	mm [inch]	1325-11XXXXMXXXCXXX Δ
A1	2018/01/18	MODIFY PART NO.	William Chen	x.XX ±0.25	CHECK	DATE	SIZE	A4	TITLE:
A0	2012/03/31	NEW	William Chen	x.XXX ±0.15	TANG	2025/09/03	SHEET	3/5	1.27 Pin Header, SINGLE ROW, SMT, H=2.5
REV	DATE	MODIFICATION DESCRIPTION	CHANGE	Angle ± 3'	APPROVE	DATE	PROJ.	ϕ \leftarrow	Customer NO.
				DIM TOL	Steven Zhao	2025/09/03			



Http: www.wcon.com

WCON-Dongguan Tel: +86 769 85358920 Fax: +86 769 85358915 E-mail: sales@wcon.com	WCON-Kunshan Tel: +86 512 57468408 Fax: +86 512 57468468 E-mail: sales@wcon.com
---	--

HSF

Packaging Quantity Refers To The Following Table

B=3.0

PINS	W	Q' ty/Reel	Q' ty/Inner Box	Q' ty/Box
2	12	700	4,200	12,600
3	16	700	2,800	8,400
4	16	700	2,800	8,400
5	24	700	2,100	6,300
6	24	700	2,100	6,300
7	24	700	2,100	6,300
8	24	700	2,100	6,300
9	24	700	2,100	6,300
10	24	700	2,100	6,300
11	32	700	1,400	4,200
12	32	700	1,400	4,200
13	32	700	1,400	4,200
14	32	700	1,400	4,200
15	44	700	1,400	4,200
16	44	700	1,400	4,200
17	44	700	1,400	4,200
18	44	700	1,400	4,200
19	44	700	1,400	4,200
20	44	700	1,400	4,200
21	44	700	1,400	4,200
22	44	700	1,400	4,200
23	44	700	1,400	4,200
24	56	700	700	2,100
25	56	700	700	2,100
26	56	700	700	2,100

B=3.0

PINS	W	Q' ty/Reel	Q' ty/Inner Box	Q' ty/Box
27	56	700	700	2,100
28	56	700	700	2,100
29	56	700	700	2,100
30	56	700	700	2,100
31	56	700	700	2,100
32	56	700	700	2,100
33	56	700	700	2,100
34	72	700	700	2,100
35	72	700	700	2,100
36	72	700	700	2,100
37	72	700	700	2,100
38	72	700	700	2,100
39	72	700	700	2,100
40	72	700	700	2,100
41	72	700	700	2,100
42	72	700	700	2,100
43	72	700	700	2,100
44	72	700	700	2,100
45	72	700	700	2,100
46	88	700	700	2,100
47	88	700	700	2,100
48	88	700	700	2,100
49	88	700	700	2,100
50	88	700	700	2,100

B=3.5

PINS	W	Q' ty/Reel	Q' ty/Inner Box	Q' ty/Box
2	12	650	3,900	11,700
3	16	650	2,600	7,800
4	24	650	1,950	5,850
5	24	650	1,950	5,850
6	24	650	1,950	5,850
7	24	650	1,950	5,850
8	24	650	1,950	5,850
9	24	650	1,950	5,850
10	24	650	1,950	5,850
11	32	650	1,300	3,900
12	32	650	1,300	3,900
13	32	650	1,300	3,900
14	44	650	1,300	3,900
15	44	650	1,300	3,900
16	44	650	1,300	3,900
17	44	650	1,300	3,900
18	44	650	1,300	3,900
19	44	650	1,300	3,900
20	44	650	1,300	3,900
21	44	650	1,300	3,900
22	44	650	1,300	3,900
23	56	650	650	1,950
24	56	650	650	1,950
25	56	650	650	1,950
26	56	650	650	1,950

A3	2025/09/03	Standardization Drawing	CP	OPERATION	DRAW	DATE	SCALE	Fit	PART NO.
A2	2023/02/02	Add Flatness	Du Ying	x.X ±0.40	CP	2025/09/03	UNIT	mm [inch]	1325-11XXXXMXXXCXXX
A1	2018/01/18	MODIFY PART NO.	William Chen	x.XX ±0.25	CHECK	DATE	SIZE	A4	TITLE:
A0	2012/03/31	NEW	William Chen	x.XXX ±0.15	TANG	2025/09/03	SHEET	4/5	1.27 Pin Header, SINGLE ROW, SMT, H=2.5
REV	DATE	MODIFICATION DESCRIPTION	CHANGE	Angle ± 3'	APPROVE	DATE	PROJ.		Customer NO.
				DIM TOL	Steven Zhao	2025/09/03			



Http: www.wcon.com

WCON-Dongguan Tel: +86 769 85358920 Fax: +86 769 85358915 E-mail: sales@wcon.com	WCON-Kunshan Tel: +86 512 57468408 Fax: +86 512 57468468 E-mail: salesks@wcon.com
---	--

HSF

Packaging Quantity Refers To The Following Table

B=3.5

PINS	W	Q' ty/Reel	Q' ty/Inner Box	Q' ty/Box
27	56	650	650	1,950
28	56	650	650	1,950
29	56	650	650	1,950
30	56	650	650	1,950
31	56	650	650	1,950
32	56	650	650	1,950
33	72	650	650	1,950
34	72	650	650	1,950
35	72	650	650	1,950
36	72	650	650	1,950
37	72	650	650	1,950
38	72	650	650	1,950
39	72	650	650	1,950
40	72	650	650	1,950
41	72	650	650	1,950
42	72	650	650	1,950
43	72	650	650	1,950
44	72	650	650	1,950
45	88	650	650	1,950
46	88	650	650	1,950
47	88	650	650	1,950
48	88	650	650	1,950
49	88	650	650	1,950
50	88	650	650	1,950

B=4.5

PINS	W	Q' ty/Reel	Q' ty/Inner Box	Q' ty/Box
2	16	600	2,400	7,200
3	16	600	2,400	7,200
4	24	600	1,800	5,400
5	24	600	1,800	5,400
6	24	600	1,800	5,400
7	24	600	1,800	5,400
8	24	600	1,800	5,400
9	24	600	1,800	5,400
10	32	600	1,200	3,600
11	32	600	1,200	3,600
12	32	600	1,200	3,600
13	44	600	1,200	3,600
14	44	600	1,200	3,600
15	44	600	1,200	3,600
16	44	600	1,200	3,600
17	44	600	1,200	3,600
18	44	600	1,200	3,600
19	44	600	1,200	3,600
20	44	600	1,200	3,600
21	44	600	1,200	3,600
22	44	600	1,200	3,600
23	56	600	600	1,800
24	56	600	600	1,800
25	56	600	600	1,800
26	56	600	600	1,800

B=4.5

PINS	W	Q' ty/Reel	Q' ty/Inner Box	Q' ty/Box
27	56	600	600	1,800
28	56	600	600	1,800
29	56	600	600	1,800
30	56	600	600	1,800
31	56	600	600	1,800
32	72	600	600	1,800
33	72	600	600	1,800
34	72	600	600	1,800
35	72	600	600	1,800
36	72	600	600	1,800
37	72	600	600	1,800
38	72	600	600	1,800
39	72	600	600	1,800
40	72	600	600	1,800
41	72	600	600	1,800
42	72	600	600	1,800
43	72	600	600	1,800
44	72	600	600	1,800
45	88	600	600	1,800
46	88	600	600	1,800
47	88	600	600	1,800
48	88	600	600	1,800
49	88	600	600	1,800
50	88	600	600	1,800

A3	2025/09/03	Standardization Drawing	CP	OPERATION	DRAW	DATE	SCALE	Fit	PART NO. 1325-11XXXXMXXCXXX
A2	2023/02/02	Add Flatness	Du Ying	X.X ±0.40	CP	2025/09/03	UNIT	mm [inch]	
A1	2018/01/18	MODIFY PART NO.	William Chen	X.XX ±0.25	CHECK	DATE	SIZE	A4	TITLE: 1.27 Pin Header, SINGLE ROW, SMT, H=2.5
A0	2012/03/31	NEW	William Chen	X.XXX ±0.15	TANG	2025/09/03	SHEET	5/5	
REV	DATE	MODIFICATION DESCRIPTION	CHANGE	Angle ± 3'	APPROVE	DATE	PROJ.		Customer NO.
				DIM TOL	Steven Zhao	2025/09/03			



Http: www.wcon.com

WCON-Dongguan Tel: +86 769 85358920 Fax: +86 769 85358915 E-mail: sales@wcon.com	WCON-Kunshan Tel: +86 512 57468408 Fax: +86 512 57468468 E-mail: salesks@wcon.com
---	--