

# HSF

**NOTES:**

Rated Current: 5.0AMP.(20°C, 1\*2P-1\*15P)  
 3.0AMP.(20°C, 1\*16P-1\*40P)  $\triangle A2$

Contact Resistance: 20mΩ Max.

Withstand Voltage: 1000V AC/DC

Insulation Resistance: 1000MΩ Min.

Operation Temperature: -40°C to +125°C (Gold Plating)  $\triangle A2$   
 -40°C to +105°C (Tin Plating)  $\triangle A2$

Contact Material: Copper Alloy

Contact Plating: Au or Sn Over 30u" Min Ni  $\triangle A2$

Insulator Material: PA9T+G.F UL94V-0 BK  $\triangle A2$

## Ordering Information

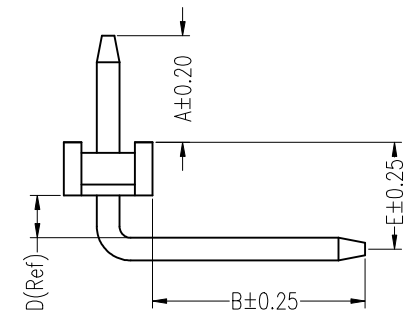
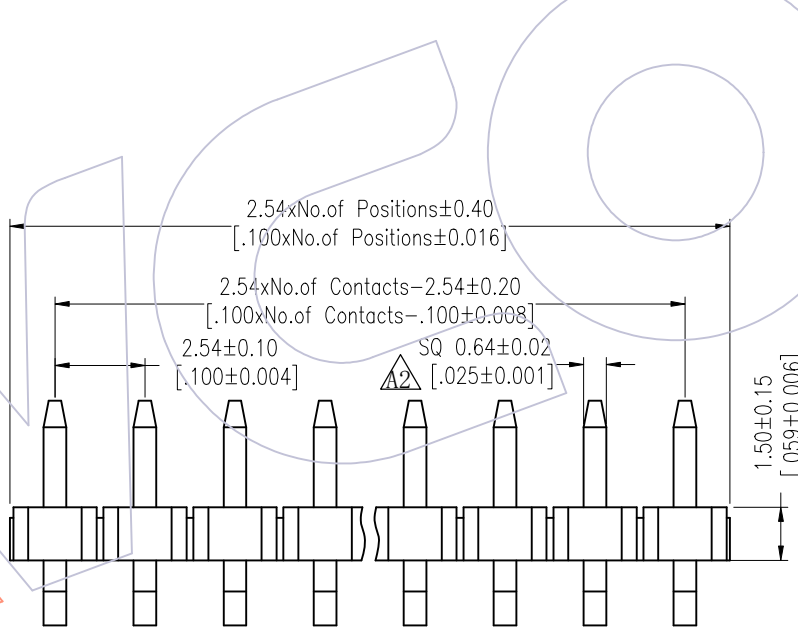
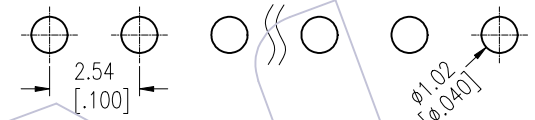
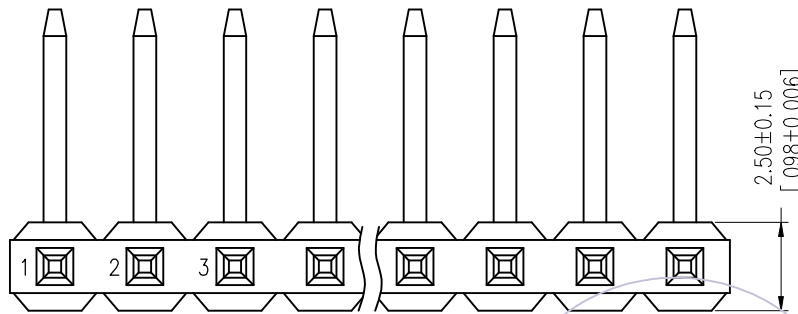
1115-1 1 XX XX R XXX C 0 XX  $\triangle A1$

Plastic Layer  
 Plastic Row  
 No. of Pins Per Row: 02-40  
 Contact Plating  
 G0=Gold Flash  
 G3=10u"Au, BG3=8u"PdNi+2u"Au  
 G4=15u"Au, BG4=13u"PdNi+2u"Au  
 G5=30u"Au, BG5=28u"PdNi+2u"Au  
 S0=Gold Flash/Tin  
 S3=10u"Au/Sn, P3=8u"PdNi+2u"Au/Sn  
 S4=15u"Au/Sn, P4=13u"PdNi+2u"Au/Sn  
 S5=30u"Au/Sn, P5=28u"PdNi+2u"Au/Sn  $\triangle A2$   
 SN=Bright Tin  
 SM=Matte Tin

Series No. 01-99  
 Packing 0=PE Bag  
 Insulator Material C=PA9T(Standard)  
 Pin Length L(See Table)  
 Type: R=R/A

Item	Pin Length	A	D	E	B	Mating
Standard	10.3	3.00	1.2	3.02	3.5	2135/2150T/2157
	10.8				4.0	2145/2150
	11.8				5.0	2168T/2171T
	12.5				5.84	2171/2185X
Standard	9.3	2.00 (THR)	1.2	3.02	3.5	2135/2150T/2157
	9.8				4.0	2145/2150
	10.8				5.0	2168T/2171T
	11.5				5.84	2171/2185X
Alternate						

Recommended P.C.B Layout (Top Side)  
 (PCB BOARD TOLERANCE ±0.05)  
 (PCB Thickness: T=1.60mm)



REV	DATE	MODIFICATION DESCRIPTION	CHANGE	OPERATION	DRAW	DATE	SCALE	Fit	PART NO.
A2	2025/03/19	Standardization Drawing	CP	x.X ±0.40	CP	2025/03/19	UNIT	mm	1115-11XXXXRXXXCOXX
A1	2018/01/22	Modify P/N	Ruipeng	x.XX ±0.25	CHECK	DATE	SIZE	A4	TITLE: PH2.54 SINGLE ROW 90° H=1.5 PLANE BENDING
AO	2012/05/02	NEW	William Chen	x.XXX ±0.15	TANG	2025/03/19	SHEET	1/2	
				Angle ± 3'	APPROVE	DATE			Customer NO.
				DIM TOL	Steven Zhao	2025/03/19	PROJ.		

**WCON**  
 Http: www.wcon.com

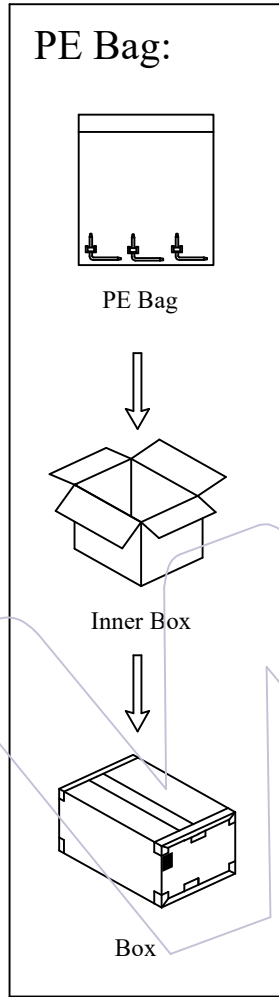
WCON-Dongguan  
 Tel: +86 769 85358920  
 Fax: +86 769 85358915  
 E-mail: sales@wcon.com

WCON-Kunshan  
 Tel: +86 512 57468408  
 Fax: +86 512 57468468  
 E-mail: salesks@wcon.com

# HSF

Packing:

Packaging Quantity Refers To The Following Table



PINS	Q' ty/Bag L≤10.0	PINS	Q' ty/Bag L≤10.0	PINS	Q' ty/Bag 10.0<L≤16.0	PINS	Q' ty/Bag 10.0<L≤16.0
1	1000	21	400	1	1000	21	200
2	1500	22	400	2	1000	22	200
3	1000	23	400	3	1000	23	200
4	1000	24	400	4	1000	24	200
5	1000	25	400	5	1000	25	200
6	1000	26	200	6	1000	26	200
7	1000	27	200	7	1000	27	200
8	1000	28	200	8	1000	28	200
9	500	29	200	9	500	29	200
10	500	30	200	10	500	30	200
11	500	31	200	11	500	31	200
12	500	32	200	12	500	32	200
13	500	33	200	13	500	33	200
14	500	34	200	14	500	34	200
15	500	35	200	15	300	35	200
16	500	36	200	16	300	36	200
17	500	37	200	17	300	37	200
18	400	38	200	18	300	38	200
19	400	39	200	19	300	39	150
20	400	40	200	20	200	40	150

REV	DATE	MODIFICATION DESCRIPTION	CHANGE	OPERATION	DRAW	DATE	SCALE	Fit	PART NO.
A2	2025/03/19	Standardization Drawing	CP	x.X ±0.40	CP	2025/03/19	UNIT	mm	1115-11XXXXRXXXCOXX
A1	2018/01/22	Modify P/N	Ruipeng	x.XX ±0.25	CHECK	DATE	SIZE	A4	TITLE:
AO	2012/05/02	NEW	William Chen	x.XXX ±0.15	TANG	2025/03/19	SHEET	2/2	PH2.54 SINGLE ROW 90° H=1.5 PLANE BENDING
				Angle ± 3'	APPROVE	DATE	PROJ.		Customer NO.
				DIM TOL	Steven Zhao	2025/03/19			



Http: [www.wcon.com](http://www.wcon.com)

WCON-Dongguan Tel: +86 769 85358920 Fax: +86 769 85358915 E-mail: <a href="mailto:sales@wcon.com">sales@wcon.com</a>	WCON-Kunshan Tel: +86 512 57468408 Fax: +86 512 57468468 E-mail: <a href="mailto:salesks@wcon.com">salesks@wcon.com</a>
---	--